



CATALOG

2026



DEAR DIARY,

I've been reflecting on what truly makes me, *me*. From **kids' and family games**, to **strategy titles, outdoor fun**, and **brain-teasing puzzles**, I've never felt more complete.

Over the years, I've learned to embrace who I am, accessible, inclusive, and, above all: **Simply Fun for All!**

YAY!

Last year, I became good friends with **iDventure**. Can you guess my new friend's passion? **Escape games, especially Clueboxes!** These beautifully crafted wooden puzzles hold a world of secrets inside. Opening one feels like diving into a story that unfolds piece by piece.

I still hang out with my party buddy, **The Darker Side**. I honestly can't resist their dark humor. Lately, they introduced me to **Judgmental AF**, and I can't wait to bring it to my next game night.

It's been several months now and... I'm officially in a relationship with **Iello!** We're exclusive, can you believe it? They keep surprising me with games I've never tried before, like **King of Tokyo**, a title so popular it's become a universe of its own!

I'm excited to keep creating memorable moments that bring people together.

**Until next time,
Blue Orange Games**



Blue Orange Games Team - Staff Retreat in France
(June 25th, 2025)



Contents

NEW GAMES 2026

6-12

Mom'N Pups	Gobblers
Hamster Hammock	Got Five!
Belly Flop	What's the Point?
Gobblers on the Go!	Sounds Like You!
2 PineApples	a-way
Swoobee	Gygès
Yo-Spin	

PRESCHOOL COLLECTION

13-19

BoomBoom the Balancing Panda	Tongues Out!
Zimbbos	Where's Squeaky?
Chickyboom	Freeze Dance with Chilly
Pengoloo	Hoot or Toot
Pengoloo Plastic	Pass the Ball with Olie
Pancake Monster	Color Scramble with Cora
Ta-Da Bing!	

KIDS GAMES

20-26

Tap a Bell'O	Super Genius Collection
Cubeez	Scatter Brain
Gobbler Gobblers	Sumoku
Gobbler Gobblers Plastic	Pixy Cubes
Go Go Gelato	Tumble Maze

FAMILY GAMES

27-31

Tumball	Slam Cup
Beat the 8 Ball	Do You Know Your Peeps?
Dr. Eureka	Fifty Fruity
Who Did it?	2Win

PARTY GAMES

32-35

Blind Jack	Link City
Bag of Chips	Burger ASAP!
Slingz	Beagle or Bagel?
Cross Clues	Patata!

CLASSIC GAMES

36-39

Fastrack	Yamslam
Fastrack Mini	Pocket Yamslam
Bendomino	Snip Snap
Double Shutter	Flash!

STRATEGY GAMES

40-48

Photosynthesis	Expansion
Photosynthesis - Under the Moonlight Expansion	Kingdomino Origins Planet
Gobbler!	Shadow House Masquerade
Kingdomino	Next Station London
Kingdomino - The Lost Treasures Expansion	Next Station Tokyo
Queendomino	Next Station Paris
Dragomino	Linkx
Kingdomino - Age of Giants	Battle Sheep

SKILL TOYS & OUTDOOR

49-54

Loopy Looper Collection	ZipzyBall
Loopy Hoopies Collection	FootzyBall
Swoobee	Yo-Spin

DISPLAYS

55

MARKETING TOOLS

56

iDVENTURE

57-60

Cluebox 1: Schrodinger's Cat	Cluebox 5: Cambridge Labryinth
Cluebox 2: Davy Jones Locker	Cluebox 6: Sherlock's Camera
Cluebox 3: Nautilus	Cluebox 7: Pyramid of the Sun
Cluebox 4: The Trial of Camelot	

IELLO

61-69

Fifty	King of Tokyo: Monster Pack 4 - Cybertooth
Luz	King of Tokyo: Monster Pack 5 - Luchador
Time Bomb	Little Soldiers
Bunny Kingdom Town	Popcorn
King of Tokyo	Bunny Kingdom
King of Tokyo: Duel	Ancient Knowledge
King of Tokyo: Duel: Baby Gigazaur Booster	Ancient Knowledge: Heritage Expansion
King of Tokyo: Even More Wicked	Schotten Totten
King of Tokyo: Mindbug	Welcome to the Dungeon
King of Tokyo: Monster Pack 2 - King Kong	

MARKETING TOOLS

70

THE DARKER SIDE

71-74

Slingz, 18+	Analyze Me
Shut up!	Patata, 18+
Judgmental AF	

RETAILER TOOLKIT

75

INDEX OF GAMES

75-76

INDEX BY AGE

77-78

Top Picks

Kids games



Preschool collection

Family games



Classic games

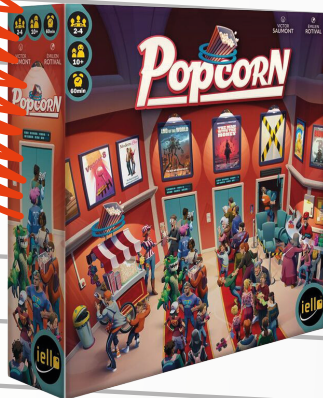
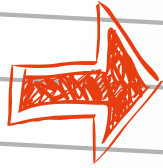


Party games

Strategy games



Must Have



ClueBox 1
Schrodinger's Cat



ClueBox 2
Davy Jones' Locker



ClueBox 6
Sherlock's Camera



ORDER INFORMATION

Connect with your Sales Representative or Blue Orange to keep your shelves stocked with bestsellers and discover what's new!

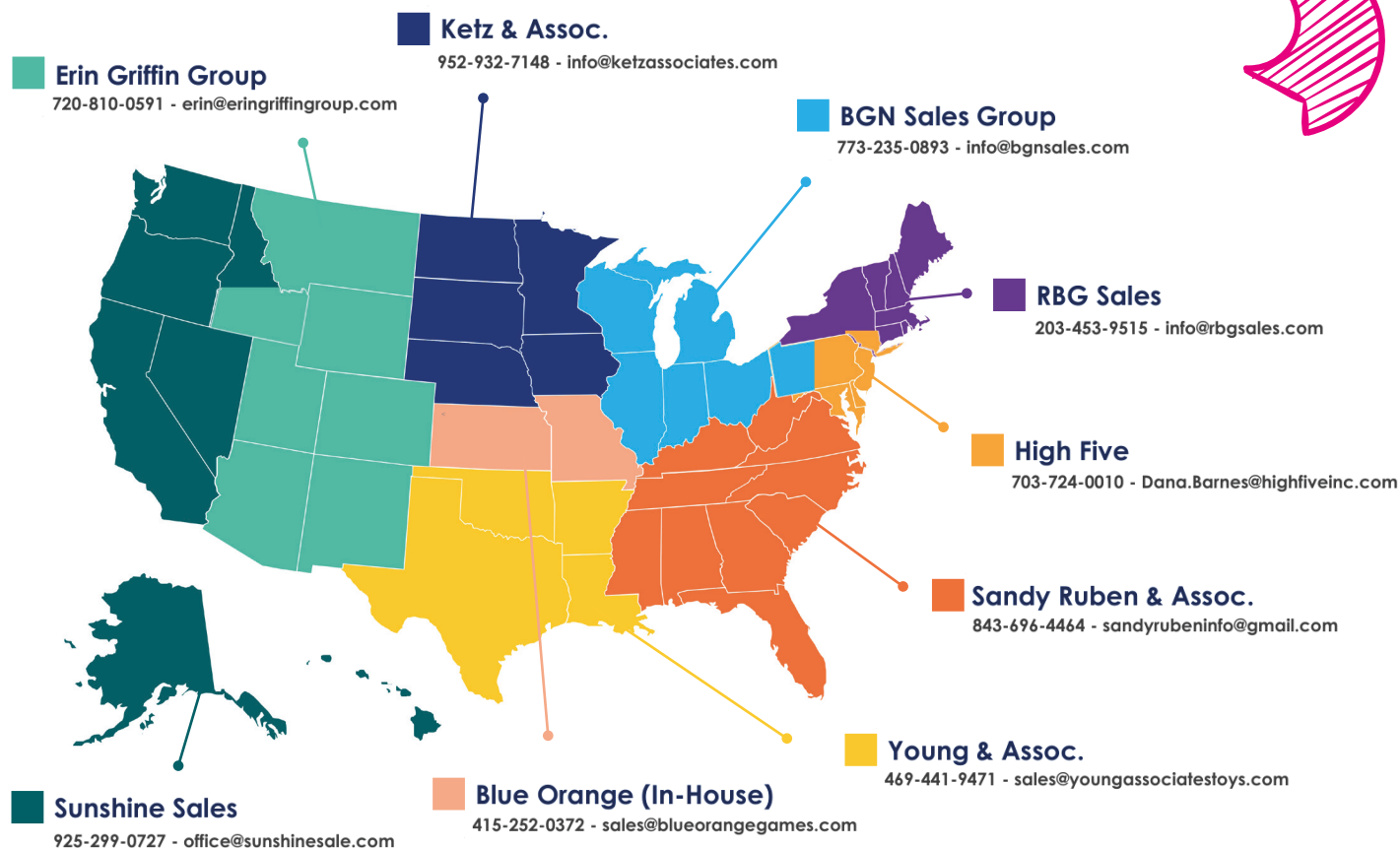
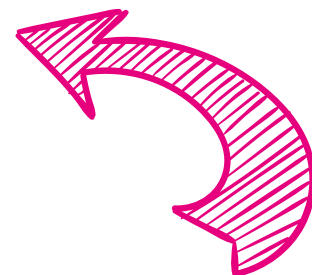


**Blue Orange Sales
Department**

415-252-0372

email sales@blueorangegames.com

Sales Representatives



Let's Get Your Next Order Started!

Order with Your Sales Representative
Your local representative is ready to help you place orders, recommend products, and answer any questions you may have.

Order Online via Faire
faire.com/direct/bog

Order Online via MarketTime
apps.markettime.com/login
(use ID# M33260 to access the Blue Orange catalog)



70 team members worldwide
We distribute our games in more than 60 countries



BLUE ORANGE GROUP



Leads the editorial direction for the U.S. market. Publishes and distributes Blue Orange titles across the U.S., Canada, Australia, and New Zealand.



Defines the global editorial vision for all Blue Orange games. Manages international publishing and distribution (outside North America, Australia and New Zealand).



Bandjo!
 Good vibes only
 Handles product research, development, and game creation.



The Darker Side



Distributes Blue Orange games in countries not covered by other group entities.

AWARD-WINNING GAMES

We have received over 250 awards, including:



- AblePlay Award Seal
- Academic's Choice Brain Toy
- ASTRA Best Toys for Kids
- Creative Child Magazine's Game of the Year

- Dice Tower Seal of Excellence
- Play Advances Language Award
- Major Fun! Award
- Mensa Select

- Mom's Choice Award
- NAPPA Gold Winner
- Oppenheim Platinum Seal
- Parents' Choice Gold Award
- Spiel des Jahres

- Tillywig Top Fun Award
- TOTY (Toy Of The Year)
- TAGIE Award
- Clamour Influencer Favorite
- The Toy Book Top Holiday

New Games 2026

Preschool



Kids



Travel



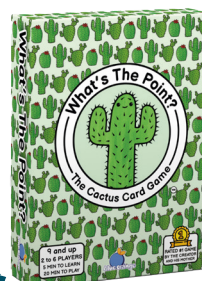
Skill Toys & Outdoors



Family



Party



Strategy





Mom'n Pups AGES 3 & Up | 2-4 PLAYERS

In this heartwarming cooperative game, players help a mother dog and her puppies find each other on the board. Each turn, Mommy Dog moves from one side while the puppies come from the other, advancing after a die roll. Along the way, fun actions keep everyone engaged as you work together to bring the family closer. The game ends in the sweetest way possible — when all the wooden figurines meet and snug perfectly together in a big hug.



SKILLS Focus & Attention, Social Play, Cooperation



Hamster Hammock AGES 5 & Up | 2-4 PLAYERS

The hamsters are taking a vacation. Everyone wants to hang out on the hammock! **Carefully place your hamsters on the hammock and try to hang on without falling out.** If the hammock tilts on your turn, all other players can send one of their hamsters for a rest on a fluffy beach towel. The first player with all hamsters on the hammock and resting on beach towels wins the game!



SKILLS Dexterity

Mom'n Pups	<ul style="list-style-type: none"> • 1 Game Board • 4 Wooden Figurines (Mommy Dog and 3 Puppies) • 1 Wooden Die • Illustrated Rules 	<p>SINGLE: 7" x 7" x 1.6" / 0.67 LB CASE (6): 7.5" x 7.5" x 10" / 1 LB</p>	ITEM # 09321	<p>8 50076 93202 2</p>
Hamster Hammock	<ul style="list-style-type: none"> • 2 Hammock Legs • 1 Hammock Net • 28 Hamsters • 1 Die • Illustrated Rules 	<p>SINGLE: 10.2" x 7.9" x 2.4" / 1.2 LBS CASE (6): 15.7" x 11.5" x 9.4" / 4.5 LBS</p>	ITEM # 09310	<p>8 03979 09310 9</p>



Belly Flop

AGES 6 & Up | 2-4 PLAYERS

In Belly Flop, players take turns flicking their swimsuit-clad hippos off their launchers and watching them flip, spin, and tumble through the air before splashing down. Will they land belly-first in the pool for a perfect flop, or belly-up with nothing to show for it? Aim to land on top of other hippos to win the cards underneath and build your collection. When the last hippo has taken the plunge, count up your cards—whoever collected the most wins!

SKILLS Visual Perception, Fine Motors



Gobblers on the Go!

AGES 5 & Up | 2 PLAYERS

Gobblers on the Go! brings a fresh twist to the classic strategy hit Gobblet. With a wooden 3x3 grid, cool modern colors, and a handy travel bag, it's perfect for play anywhere. Easy to learn yet full of surprises, this portable take on tic-tac-toe lets you "gobble" smaller pieces for clever strategic wins.

SKILLS Memory | Strategy | Focus & Attention



2 PineApples

AGES 8 & Up | 2-6 PLAYERS

2 Pineapples a day keeps the sadness away! In this fast-paced game of fruity frenzy, you'll be shouting out how many Pines and Apples you see on the table. Easy, right? Not when sneaky Pineapples show up—because they count as both! With up to nine symbols to count each turn, and tricky Special Cards ready to mess with your brain, you'll need sharp eyes, quick reflexes, and a sense of humor to keep up!

SKILLS Focus & Attention, Processing Speed



Belly Flop	<ul style="list-style-type: none"> • 41 Cards • 4 Launchers • 1 Fabric Pool • Illustrated Rules 		<p>SINGLE: 7.1" x 4.3" x 1.6" / 0.5 LB CASE (12): 8.1" x 9.2" x 10.2" / 6.5 LBS</p>	ITEM # 09336	<p>8 50076 93217 6</p>
Gobblers on the Go!	<ul style="list-style-type: none"> • 1 Wooden Board • 12 Wooden Pieces • 1 Travel Bag • Illustrated Rules 		<p>SINGLE: 6" x 6" x 1.5 CASE (12): 12.5" x 6.5" x 9.5"</p>	ITEM # 09316	<p>8 03979 09316 1</p>
2 PineApples	<ul style="list-style-type: none"> • 52 Playing Cards • 24 Special Cards • 8 Reference Cards • Illustrated Rules 	<p>Watch Video</p>	<p>SINGLE: 4.6" x 4.6" x 1.6" / 0.8 LB CASE (12): 9.5" x 10" x 5" / 10 LBS</p>	ITEM # 09323	<p>8 50076 93204 6</p>



Swoobee

AGES 6 & Up | 2-8 PLAYERS



Swoobee is a throwing game for two teams, perfect to play anywhere! Players toss swoobees — soft rope rings with a fabric center, easy to grip and throw — at cork targets placed at different distances to score 1, 2, or 3 points. The farther the target, the higher the score! You can also aim at your opponents' swoobees to make them lose points, adding a tactical twist. The first team to reach 21 points wins, but with every throw offering a tough choice, victory is never guaranteed. Lightweight, easy to carry, Swoobee guarantees fun wherever you play.

SKILLS Active Play, Visual Perception, Fine Motors

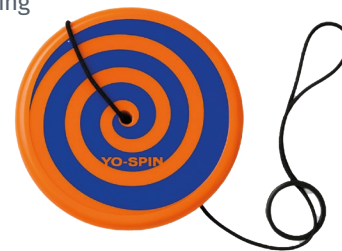


Yo-Spin

AGES 7 & Up | 1 PLAYER

Yo-Spin is a revolutionary fidget toy that combines the spinning power of a gyroscope with the freestyle play of a yo-yo. Slip on the ring, launch the disc, and perform smooth, gravity-defying tricks with the help of an ultra-stretchy elastic cord. Compact and lightweight, it's perfect for both indoor and outdoor play. Easy to learn and endlessly fun, Yo-Spin brings flow and action right to your fingertips!

SKILLS Fitness | Fine Motor Skills



Swoobee	<ul style="list-style-type: none"> • 8 Swoobees • 3 Cork Targets • 1 Bag • 1 Illustrated Rules 		SINGLE: 7.6" x 7.6" x 6" / 21 LBS CASE (6): 12.5" x 12.5" x 8" / 13 LBS	ITEM #09318	 8 03979 09318 5
Yo-Spin	<ul style="list-style-type: none"> • 1 Yo-Spin • Illustrated Rules 	watch video 	SINGLE: 8" x 5" x 1" / 0.5 LB CASE (12): 8.4" x 5.4" x 12.4" / 6.5 LBS	ITEM #09324	 8 50076 93205 3

Gobblers!



Gobblers AGES 6 & Up | 2 PLAYERS

Come celebrate 25 years of Award Winning Fun with a twist on the game that started it all! Introducing Gobblers, reimagined with sleek, modernist design and all the gaming mechanics of the original. This new version will spruce up any tabletop. Be the first to line up 3 of your Gobblers by placing them in empty spots or gobbling up smaller pieces. Remember their locations and be clever in your placements to gobble up a win!

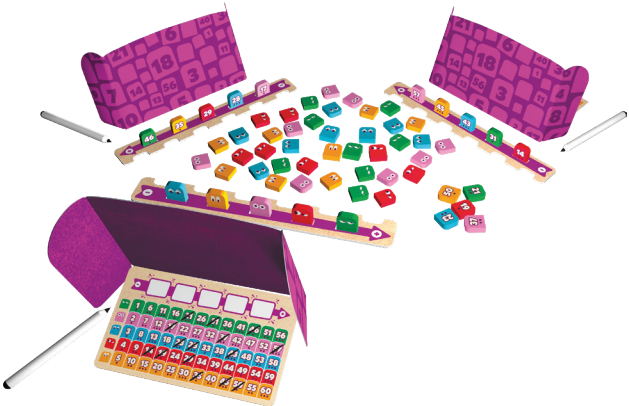
SKILLS Memory, Strategy, Focus & Attention



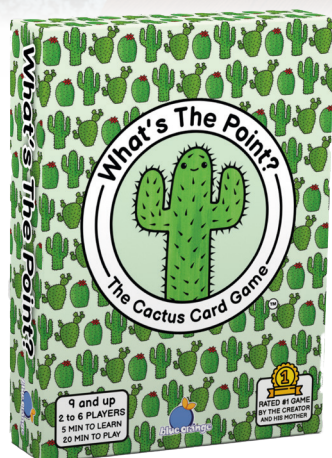
Got Five! AGES 8 & Up | 2-4 PLAYERS

Think you can outsmart your opponents without ever seeing your own numbers? In Got Five!, each player has five hidden tiles lined up on their rack. Everyone else can see them — but you can't! On your turn, you'll reveal tiles, ask questions, and gather clues to slowly narrow down the possibilities. Are your tiles higher or lower, close together or far apart? Do they share the same symbols? Piece by piece, the mystery unfolds. The first to correctly declare all five of their hidden numbers wins the game — but beware: guess wrong and you're out! Quick turns, clever logic, and just the right mix of tension and fun make Got Five! a perfect deduction game for families and friends alike.

SKILLS Math, Deduction



Gobblers	<ul style="list-style-type: none">• 4 Plastic Bars for playing base (Assembly Required)• 12 Gobblers (6 Yellow, 6 White)• Illustrated Rules	SINGLE: 8.7" x 8.7" x 1.75" / 1.3 LB CASE (6): 9" x 9" x 10.5" / 7.8 LBS	ITEM #09303	 8 03979 09303 1
Got Five!	<ul style="list-style-type: none">• 60 tiles in 5 colors.• 4 arrow-shaped racks• 4 screens• 4 player sheets• 4 dry-erase markers• Illustrated Rules	SINGLE: 7.9" x 7.9" x 2" / 1.1 LBS CASE (6): 8.3" x 8.3" x 12.4" / 7 LBS	ITEM #09335	 8 50076 93215 2



What's the Point?

AGES 9 & Up | 2-6 PLAYERS

What's the Point? The Cactus Card Game is a fast and family-friendly game where players collect sets of cacti to score points. Use action cards to outsmart your opponents — peek at their hand and steal with a See and Steal, or block their moves with a Stop card. Every turn is a chance to grow your points or sabotage someone else's. Easy to learn yet full of strategic twists, it's a game you'll keep coming back to. Sharp, cheeky, and addictive — that's the point!

SKILLS Social Play



Sounds Like You!

AGES 14 & Up | 2-10 PLAYER

Get ready for laughter and surprises in this lively party game of connections! Players answer fun "Who" questions about themselves and their two neighbors, secretly choosing answer cards that say ME or YOU. When answers match in a complementary way, pairs move up the score track together. With 300 questions and hilarious discoveries along the way, the goal is to feel the connection and reach the top first. Perfect for groups looking to share laughs and uncover how well they really know each other.

SKILLS Social Play



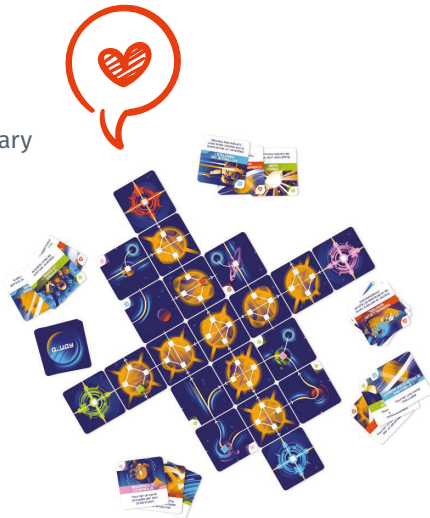
What's the Point?	<ul style="list-style-type: none"> 120 Cards Illustrated Rules 	SINGLE: 6.5" x 4.8" x 1.4" / 0.7 LB CASE (12): 10.6" x 9.4" x 8" / 8.9 LBS	ITEM #09311	 8 03979 09311 6
Sounds Like You!	<ul style="list-style-type: none"> 150 Question Cards 60 Answer Cards 10 Scoring Cards Illustrated Rules 	SINGLE: 6.5" x 4" x 2.8" / 1.2 LBS CASE (6): 9.6" x 9" x 7.7" / 8.1 LBS	ITEM #09320	 8 50076 93201 5



a-way AGES 12 & Up | 2-4 PLAYERS

You’ve been selected to compete in the legendary interstellar race across the vast reaches of the Quazarys Galaxy. In A-Way, each player pilots a vessel toward a distant base — but the catch is: you can’t always move as you want. Directional arrows, layout constraints, and hidden paths force you to think creatively and predict opponents’ moves. The first to safely reach the base wins; but risky navigation, blocked paths, or misreads can thwart even the best-laid plans.

SKILLS Strategy



Gygès AGES 8 & Up | 2 PLAYERS

Gygès is an elegant 2-player abstract strategy game where mystical rings move across the board based on their size. Each move offers surprising choices: leap forward to advance your attack or reposition the pieces to block your opponent's plans. Clever chains of moves can propel your rings across the board in unexpected ways. Outsmart your rival and land on their throne to secure victory!

SKILLS Strategy



a-way	<ul style="list-style-type: none">• 65 Cards• 4 Tokens• Illustrated Rules	SINGLE: 3.1" x 3.1" x 1.6" / 0.1 LB CASE (12): NA	ITEM #09337	 8 50076 93218 3
Gygès	<ul style="list-style-type: none">• 1 Wooden Board• 12 Metal Rings (4 Single, 4 Double, 4 Triple)• Rules Booklet	SINGLE: 11.8" x 11.8" x 2" / 0.3 LBS CASE (12): 3.5" x 6.5" x 10" / 4 LBS	ITEM #09319	 8 50076 93200 8

Preschool Collection

Tactile high-quality games for developing young minds



BoomBoom the Balancing Panda

AGES 3 & Up | 1-6 PLAYERS

Our new charming tumbling panda is trying to balance as many bamboos as he can! Players take turns adding a wooden cylinder anywhere on BoomBoom; with different sized pieces and a teeter-totter base, placement choice is key. The last player to add a bamboo without letting any drop wins!

SKILLS Fine Motor | Social Play | Balancing



Zimbbos

AGES 3 & Up | 1-4 PLAYERS

Welcome to the African Savannah! The elephant family is on their seasonal quest to find water! Help them stand on top of each other so they can see beyond the horizon. Taking turns, roll the die to find out how many elephants to add and place them in numerical order from 1 to 10. If you roll a star, you will need to add a bar or an animal friend to the pyramid. Can you find the right balance and help the elephant family stick together? The player who successfully places the 10th elephant on top of the pyramid without it falling, wins the game!

SKILLS Fine Motors, Math, Social Play

AWARDS

- OPPENHEIM GOLD SEAL
- ASTRA BEST TOYS FOR KIDS
- PARENTS' CHOICE SILVER



BoomBoom the Balancing Panda	<ul style="list-style-type: none"> • 1 Wooden Balancing Panda • 24 Wooden Cylinders • Illustrated Rules 	SINGLE: 9.5"x 9.5"x 2.3" / 1.8 LBS CASE (6): 10"x 10.6"x 14.4" / 12 LBS	ITEM #00222	 8 03979 00222 4
Zimbbos	<ul style="list-style-type: none"> • 10 Wooden Elephants • 5 Wooden Jokers • 3 Wooden Balancing Bars • 1 Wooden Die • Illustrated Rules 	SINGLE: 9.5"x 9.5"x 2.3" / 2 LBS CASE (6): 10"x 10.6"x 14.4" / 13 LBS	ITEM #00180	 8 03979 00180 7



Chickyboom AGES 4 & Up | 2-4 PLAYERS

The rocking, rolling roost! Get the chickens, wagon wheels, and hay bales off the teetering roost without it toppling! Pick your pieces carefully, as each one has a different weight and point value. The player with the highest score wins.

SKILLS Fine Motor | Social Play | Math



AWARDS

- OPPENHEIM PLATINUM SEAL
- PARENTS MAGAZINE'S BEST TOYS OF THE YEAR
- ASTRA BEST TOYS FOR KIDS



Chickyboom

- 3 Wooden Big Chickens
- 3 Wooden Small Chickens
- 7 Wooden Hay Bales
- 7 Wooden Wagon Wheels
- 1 Wooden Wobbling Perch
- Illustrated Rules

SINGLE: 9.5" x 9.5" x 2.3" / 1.7 LBS
CASE (6): 10" x 10.6" x 14.4" / 12 LBS

ITEM #00350





Pengoloo

AGES 4 & Up | 2-4 PLAYERS

The fun south pole eggs-pedition! Each turn, players roll the colored dice and look under two penguins for eggs that match the colors on the face of each die. Guess correctly and keep the penguin on your iceberg. Collect six penguins to win!

SKILLS Memory | Social Play | Visual perception



AWARDS

- DR. TOY BEST CLASSIC
- OPPENHEIM GOLD SEAL
- NAPPA GOLD





Pengoloo (Plastic Version)

AGES 4 & Up | 2-4 PLAYERS

Pengoloo is also available in a plastic version. With easy to clean, vividly colored plastic components, this version offers a cost-effective alternative to the original wooden game.

SKILLS Memory | Social Play | Visual perception



Pengoloo	<ul style="list-style-type: none">• 12 Wooden Penguins• 12 Wooden Colored Eggs• 4 Wooden Iceberg Scoring Boards• 2 Wooden Colored Dice• Illustrated Rules	<p>SINGLE: 9.5" x 9.5" x 2.3" / 1.4 LBS</p> <p>CASE (6): 10.4" x 10.6" x 13.8" / 9.5 LBS</p>	ITEM #00270	 8 03979 00270 15
Pengoloo - Plastic Version	<ul style="list-style-type: none">• 12 Plastic Penguins• 12 Plastic Colored Eggs• 4 Iceberg Scoring Boards• 2 Plastic Colored Dice• Illustrated Rules	<p>SINGLE: 10.3" x 10.3" x 2.12" / 0.9 LB</p> <p>CASE (6): 10.5" x 10.5" x 13" / 6.3 LBS</p>	ITEM #00271	 8 03979 00271 2



Pancake Monster

AGES 3 & Up | 2-4 PLAYERS

Feed the Giant Monster his favorite food, but careful, you never know when he'll bite back! Be the first to stack all your pancakes onto his tongue without the Monster biting you. It's a chomping good game and it doubles as a pop-up hamper!

SKILLS Social Play | Math






Ta-Da Bing!

AGES 4 & Up | 3-5 PLAYERS

Come one, come all! The mini-magicians' competition is about to start! Do you see the toys, the image tiles and the red magic scarf? Grab a seat and get ready to show off your skills. Will you impress your friends with the famous disappearing scarf trick? Now is the perfect time to put all your training to good use!

SKILLS Visual Perception | Memory | Problem Solving



Pancake Monster	<ul style="list-style-type: none"> • 1 Giant Pop-up Monster • 1 Deck of 12 Pancake Cards • Illustrated Rules 	<p>Watch Video</p> 	<p>SINGLE: 15" x 13" x 2.5" / 1.2 LBS CASE (6): 15.9" x 15.3" x 13.6" / 8 LBS</p>	ITEM #09072	
Ta-Da Bing!	<ul style="list-style-type: none"> • 10 Wooden Toys (Ball, Blocks, Book, Bunny, Car, Dinosaur, Doll, Piano, Plane, Train) • 10 Double-Sided Image Tiles • 1 Red Magic Scarf • 15 Star Tokens • Illustrated Rules 	<p>Watch Video</p> 	<p>SINGLE: 7" x 7" x 1.6" / 0.73 LB CASE (6): 10.8" x 7.7" x 7.9" / 5.3 LBS</p>	ITEM #09098	



Tongues Out! AGES 4 & Up | 2-4 PLAYERS

The pugs ate all the lollipops! Luckily their tongues are dyed the color of the lollipop they had! Each turn, try to match two lollipops on the dice with two squishy pugs that you think licked them! When you gently squeeze the little pups, their tongue comes out! No matter how cute these chubby pugs are, they will not get away with this... The first player to match six pugs with lollipops' colors wins the game!

SKILLS Memory | Social Play



AWARDS

- CREATIVE CHILD MAGAZINE'S CREATIVE PLAY OF THE YEAR
- THE TOY INSIDER TOP HOLIDAY TOY
- PAL (PLAY ON WORDS) AWARD
- MOM'S CHOICE AWARD GOLD
- ASTRA BEST TOY FOR KIDS FINALIST



Tongues Out!

- 12 Pugs
- 2 Lollipop Dice
- 4 Parklets Cards
- Illustrated Rules

watch video



SINGLE: 10.2" x 7.9" x 2.4" / 1.2 LBS
CASE (6): 15.7" x 11.5" x 9.4" / 8 LBS

ITEM #09046



8 03979 09046 7



Where's Squeaky?

AGES 4 & Up | 2-10 PLAYERS

Can you find Squeaky the Mouse? **One player hides her, and the rest of the players must find her!** If you listen closely, you can hear her laughing and giggling louder and louder! Once you find the silly little mouse, return her back to her Cheese Box so she can finish her meal!

SKILLS Social Play | Focus & Attention



AWARDS

- MOM'S CHOICE GOLD
- CREATIVE CHILD MAGAZINE'S PREFERRED CHOICE
- TOTY GAME OF THE YEAR FINALIST
- LEARNING EXPRESS BEST TOY AWARD



Freeze Dance with Chilly

AGES 4 & Up | 1-4 PLAYERS

It's time to freeze dance with Chilly! They have five special songs to sing just for you. Listen to the little penguin's words, follow what they say... and make sure you freeze when they tell you to! This interactive game will get everybody up and dancing! From imitating animals to checking the colors you wear... just follow directions to keep up with Chilly! Songs include Freeze Fun, Animal Freeze, Color Freeze, Active Freeze and as a bonus: The Floor is Lava!

SKILLS Active Play | Social Play



AWARDS

- CREATIVE CHILD MAGAZINE'S CREATIVE PLAY OF THE YEAR



Where's Squeaky?	<ul style="list-style-type: none">• 1 Mouse Toy (Batteries included)• 1 Cheese Box• Illustrated Rules	<div>Watch video</div>	<div>SINGLE: 5.4" x 6.2" x 4.25" / 0.6 LB</div> <div>CASE (6): 7.5" x 14.6" x 14.8" / 4.1 LBS</div>	ITEM #09026	 8 03979 09026 9
Freeze Dance with Chilly	<ul style="list-style-type: none">• 1 Penguin Toy (Batteries included)• Illustrated Rules	<div>Watch video</div>	<div>SINGLE: 5.4" x 6.2" x 4.25" / 0.7 LB</div> <div>CASE (6): 7.5" x 14.6" x 14.8" / 5.95 LBS</div>	ITEM #09048	 8 03979 09048 1

Hoot or Toot

AGES 4 & Up | 2-4 PLAYERS



You probably have heard Mr. Owl hooting... but have you ever heard him tooting? Join Mr. Owl in this fun twist on a traditional memory game, where you need to match his hoot and toot sounds with illustrated tokens. Shake the little owl and listen carefully to the sound he makes, then flip a token on the table to see if it matches the sound.

Remember where each token is to collect them faster! The first player to collect six tokens featuring each color wins.

SKILLS Memory | Social Play

AWARDS

- CREATIVE CHILD MAGAZINE PREFERRED CHOICE
- THE TOY INSIDER TOP HOLIDAY TOYS

Pass the Ball with Olie

AGES 4 & Up | 2-10 PLAYERS

Be careful; it's hot! Olie the otter wants to play the Hot Potato game with you and your pals. She is sharing her favorite ball and will play music while you pass it to your friends in a circle. Go as fast as you can but don't drop the ball or get caught with the ball in your hands when the music stops, or you will be eliminated! This interactive toy features two original sound tracks and includes an inflatable ball. It's the perfect active game for young players to socialize and improve motor skills.

SKILLS Active Play | Social Play

AWARDS

- CREATIVE CHILD MAGAZINE GAME OF THE YEAR
- THE TOY BOOK TOP SUMMER TOYS

Color Scramble with Cora

AGES 3 & Up | 1-4 PLAYERS

Cora has been so busy, she's forgotten where she built her nests! Race to help Cora retrace her steps in this interactive listen-and-see color matching game. To play Color Scramble, spread out the colored nests in a room, listen carefully as Cora announces colors then quickly find and place Cora on the correct nests. Choose to play solo, competitively or cooperatively! At the end of the game, Cora will tell you how many colors you matched. For an additional challenge, advanced players can play Memory Scramble: As Cora says different colors in a sequence, adding one more color each turn, players must repeat the sequence, placing her on each nest in the correct order.

SKILLS Color Recognition | Focus & Attention | Active Play



Hoot or Toot	<ul style="list-style-type: none"> • 1 Owl Toy (Batteries included) • 36 Cardboard Tokens • Illustrated Rules 	Watch Video 	SINGLE: 6.6" x 6.2" x 4.25" / 1 LB CASE (6): 8.5" x 14.6" x 14.8" / 6.5 LBS	ITEM #09063	 8 03979 09063 4
Pass the Ball with Olie	<ul style="list-style-type: none"> • 1 Otter Toy (Batteries included) • 1 Inflatable Ball • Illustrated Rules 	Watch Video 	SINGLE: 6.6" x 6.2" x 4.25" / 1 LB CASE (6): 8.5" x 14.6" x 14.8" / 6.5 LBS	ITEM #09064	 8 03979 09064 1
Color Scramble with Cora	<ul style="list-style-type: none"> • 1 Crocodile Toy (Batteries included - Assembly Required) • 5 Colored Nests • Illustrated Rules 	Watch Video 	SINGLE: 6.6" x 6.2" x 4.25" / 1 LB CASE (6): 7.5" x 13" x 13" / 6.5 LBS	ITEM #09091	 8 03979 09091 7

Kids Games

Spark curiosity and build skills through creative play



Tap a Bell'O AGES 5 & Up | 2-9 PLAYERS

Join us in the forest for a mushroom hunt! Players take turns flipping a card on the table.

As soon as you spot a pair (number, color or symbol), clap your hands, and tap the Bell'O! Take fun to new levels by choosing silly actions to replace the clap for the next round. A quick eye and a steady hand is all it takes. When you are out of cards, you're out of the game!

SKILLS Visual Perception | Speed

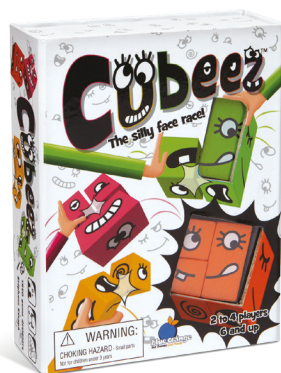


AWARDS
• CREATIVE CHILD MAGAZINE
GAME OF THE YEAR

Cubeez AGES 6 & Up | 2-4 PLAYERS

The silly face race! Can you make a face the fastest? Quickly turn and flip the three cubes to match the silly face on the challenge card. Will your Cubeez be surprised, sad, happy, angry, or a little bit of everything?

SKILLS Visual Perception | Focus & Attention | Fine Motor



AWARDS
• OPPENHEIM
GOLD SEAL

Tap a Bell'O	<ul style="list-style-type: none"> 90 Cards (9 sets of 8 playing cards numbered 1 to 8, 9 Tap a Bell'O Cards, 9 Trick Cards) 1 Mushroom Bell Illustrated Rules 	watch video 	SINGLE: 3.5" x 3.5" x 3.2" / 0.7 LB CASE (12): 11.6" x 8.3" x 8.1" / 8.6 LBS	ITEM #09076	
Cubeez	<ul style="list-style-type: none"> 12 Colored Cubes 50 Challenge Cards Illustrated Rules 		SINGLE: 5" x 6.4" x 2" / 0.7 LB CASE (8): 5.8" x 8.7" x 13.6" / 6.6 LBS	ITEM #06200	

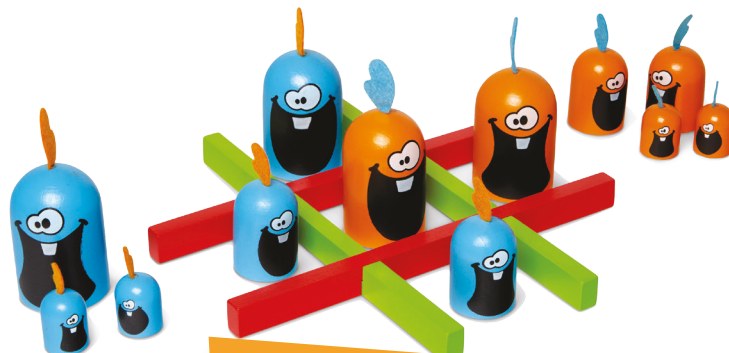


Gobblet Gobblers

AGES 5 & Up | 2 PLAYERS

Gobble up, line up, and win! This easy to learn strategy game has an irresistible cast of characters. Just like in Tic-Tac-Toe, players have to line up three of their Gobblers in a row to win. But here's the catch: you can gobble up your opponent's smaller pieces to steal their spot!

SKILLS Memory | Strategy | Focus & Attention



AWARDS

- OPPENHEIM PLATINUM SEAL
- ASTRA BEST TOYS FOR KIDS FINALIST
- CREATIVE CHILD MAGAZINE'S SEAL OF EXCELLENCE
- PARENTS' CHOICE FOUNDATION SILVER HONOR
- MAJOR FUN AWARD



Gobblet Gobblers (Plastic Version)

AGES 5 & Up | 2 PLAYERS

Featuring the familiar blue and orange colors of the original wooden game, Gobblet Gobblers' plastic version offers a light weight, easy to clean version at a more cost effective price point.

SKILLS Memory | Strategy | Focus & Attention



Gobblet Gobblers	<ul style="list-style-type: none"> • 1 Wooden Playing Grid • 12 Wooden Gobblers • Illustrated Rules 	<p>Watch video</p> 	<p>SINGLE: 9.5" x 9.5" x 2.3" / 1.2 LBS CASE (6): 13.8" x 10" x 10.6" / 8.4 LBS</p>	ITEM #00103	
Gobblet Gobblers Plastic Version	<ul style="list-style-type: none"> • 1 Plastic Playing Grid • 12 Plastic Gobblers • Illustrated Rules 		<p>SINGLE: 10.3" x 10.3" x 2.12" / 0.76 LB CASE (6): 10.5" x 10.5" x 13" / 5 LBS</p>	ITEM #00105	



Go Go Gelato! AGES 6 & Up | 2-4 PLAYERS

The yummy logic race!

Fill the order as illustrated on the challenge card by passing the three scoops back and forth between the four cones. But be careful to not touch or drop the scoops! Work quickly so that you are the first to satisfy the customer and win.

SKILLS Logic | Fine Motor | Focus & Attention | Processing Speed



AWARDS

- OPPENHEIM GOLD SEAL
- MOM'S CHOICE GOLD
- FAMILY CHOICE
- ASTRA BEST TOYS FOR KIDS



Go Go Gelato!

- 16 Cones
- 12 Gelato Scoops
- 54 Challenge Cards
- Illustrated Rules

Watch video



SINGLE: 10.4"x 10.4"x 2.4" / 1.4 LBS
CASE (6): 11"x 11"x 15" / 9.6 LBS

ITEM #04600



8 03979 04600 6

Scatter Brain

AGES 7 & Up | 2-8 PLAYERS



In this quick thinking, match-and-grab counting game, prepare to move fast! As the dice scatter, quickly snatch up cards that match the numbers on the dice. For bigger number cards, add 2 or more dice together. Will you be able to keep your cool or will your brain wind up scrambled?

SKILLS Math



Sumoku

AGES 9 & Up | 1-8 PLAYERS

The challenging crossword-style math game. In this game, players build a grid by adding up their numbered tiles so that each row matches a multiple of the number on the rolled die. Scores grow with every connected row and column. Look no further for an addicting math game!

SKILLS Math



AWARDS

- OPPENHEIM GOLD SEAL
- PARENTS' CHOICE GOLD
- PARENTS MAGAZINE 55 BEST TOYS

Scatter Brain	<ul style="list-style-type: none"> • 1 Brain Dice Shaker • 4 Dice • 67 Cards • Illustrated Rules 	watch video 	SINGLE: 4.5" x 3.66" x 3.66" / 0.8 LB CASE (12): 11.8" x 8" x 7.7" / 10.6 LBS	ITEM #09085	 8 03979 09085 6
Sumoku	<ul style="list-style-type: none"> • 96 Tiles • 1 Die • 1 Travel Pouch • Illustrated Rules 		SINGLE: 4" x 4" x 8" / 0.6 LB CASE (12): 12" x 8" x 9" / 9 LBS	ITEM #00360	 8 03979 00360 3

Our best selling, teacher approved educational series, Super Genius, just got a fresh new look and updated packaging! Additionally, we have expanded our series to include two new versions: Fruits & Veggies and Animals! With only one match between any two cards as well as multiple ways to play, your little learners will be able to practice their Reading, Mathematics and Comprehension skills while having fun learning!

- ASTRA BEST TOYS FOR KIDS
- DR. TOY 100 BEST WINNERS
- MATOR FUN
- MOM'S CHOICE GOLD
- ACADEMIC'S CHOICE BRAIN TOY
- PLAY ADVANCES LANGUAGE

SUPER GENIUS

Have fun learning

FIRST WORDS

5+
1 to 6 players

nut
bus
harm
sun
fox
six

10
fox
sun

Make orange

SUPER GENIUS
Have fun learning
READING
1 to 6 players

SUPER GENIUS

6+
1 in 6 players

Have fun learning

READING

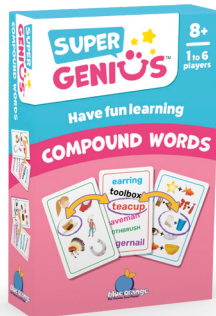
kitty
night
robin
ball
school
picture

Abac orange



Compound Words

AGES 8 & Up | 1-6 PLAYERS



Encourage your little genius to further develop their reading skills through learning compound words!

CONTENTS

- 62 Cards • Illustrated Rules

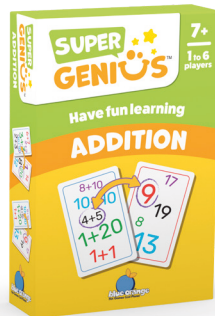
SINGLE: 2.88" x 1" x 4.5" / 0.4 LB
CASE (12): 6.89" x 6.3" x 5.51" / 4.31 LBS

ITEM #01310



Addition

AGES 7 & Up | 1-6 PLAYERS



These cards are more than the sum of their parts! You will be surprised by how much addition skills improve with this game.

CONTENTS

- 42 Cards • Illustrated Rules

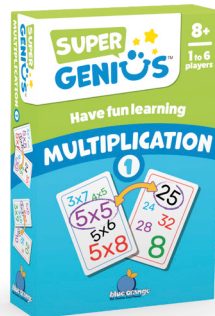
SINGLE: 2.88" x 1" x 4.5" / 0.4 LB
CASE (12): 6.89" x 6.3" x 5.51" / 4.31 LBS

ITEM #01301



Multiplication 1

AGES 8 & Up | 1-6 PLAYERS



Who will be the first to find the multiplication match? Practice your times tables, from 2 to 5, in this powerfully fun game!

CONTENTS

- 42 Cards • Illustrated Rules

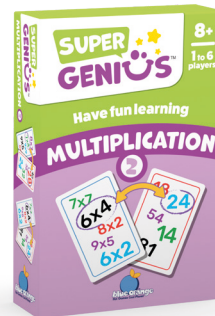
SINGLE: 2.88" x 1" x 4.5" / 0.4 LB
CASE (12): 6.89" x 6.3" x 5.51" / 4.31 LBS

ITEM #01302



Multiplication 2

AGES 8 & Up | 1-6 PLAYERS



Raise your math powers to the next level and practice multiplication with numbers 6 to 9.

CONTENTS

- 42 Cards • Illustrated Rules

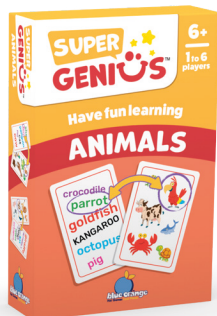
SINGLE: 2.88" x 1" x 4.5" / 0.4 LB
CASE (12): 6.89" x 6.3" x 5.51" / 4.31 LBS

ITEM #01307



Animals

AGES 6 & Up | 1-6 PLAYERS



This reading and matching game introduces young learners to a variety of wildlife and domesticated animals...and increases their interest in learning about the animal kingdom.

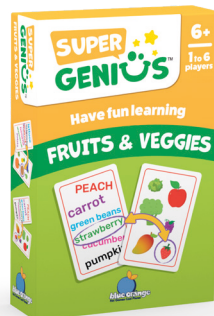
SINGLE: 2.88" x 1" x 4.5" / 0.4 LB
CASE (12): 6.89" x 6.3" x 5.51" / 4.31 LBS

ITEM #09096



CONTENTS

- 62 Cards
- Illustrated Rules



Fruits & Veggies

AGES 6 & Up | 1-6 PLAYERS

This reading and matching game introduces young learners to tasty fresh fruits and veggies...and increases interest in learning about nutritious foods.

SINGLE: 2.88" x 1" x 4.5" / 0.4 LB
CASE (12): 6.89" x 6.3" x 5.51" / 4.31 LBS

ITEM #09097



CONTENTS

- 62 Cards
- Illustrated Rules



Pixy Cubes

AGES 6 & Up | 1-4 PLAYERS

Imagination comes in cubes! These 16 vibrant cubes offer multi-dimensional creative play. Who will be the first to arrange their cubes to match the designs on the challenge cards? Whether you play competitively or by yourself, Pixy Cubes is a stimulating treat for the brain!

SKILLS Visual Perception | Creativity | Processing Speed



AWARDS

- OPPENHEIM GOLD SEAL
- CREATIVE CHILD SEAL OF EXCELLENCE
- PARENTS' CHOICE SILVER

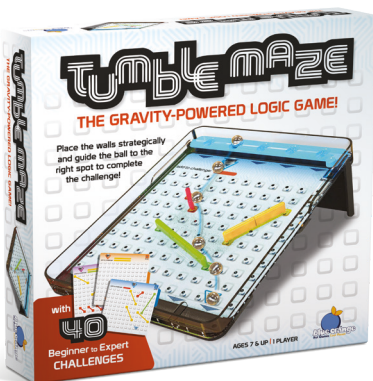


TumbleMaze

AGES 8 & Up | 1 PLAYER

Let's get this ball rolling! In this solo action puzzle game, **challenge yourself to roll a stainless steel ball into a specific spot with a minimum of trials**, navigating between obstacles and using bonus walls to guide the ball into the right direction. This ball rolling game gets tougher with higher level challenges!

SKILLS Visual Perception | Focus & Attention | Logic



AWARDS

- MOM'S CHOICE AWARD
- OPPENHEIM PLATINUM SEAL
- MENSA RECOMMENDED



Pixy Cubes	<ul style="list-style-type: none"> • 16 Cubes • 10 Design Cards • 13 Challenge Cards • Illustrated Rules 	SINGLE: 7.5"x7.5"x1.5" / 1 LB CASE(6): 8"x8"x12" / 8 LBS	ITEM #00430	 8 03979 00430 3
TumbleMaze	<ul style="list-style-type: none"> • 1 Maze Board • 22 Walls in 3 Sizes • 5 Steel Balls • 40 Challenge Sheets • Illustrated Rules 	SINGLE: 9.25"x9.25"x2" / 2 LBS CASE (6): 14.1"x10.2"x10.8" / 131 LBS	ITEM #07500	 8 03979 07500 6

Family Games

Create unforgettable moments with family and friends



Tumball

AGES 5 & Up | 2-4 PLAYERS

Using precision and dexterity, players carefully take turns, placing beads, one by one, on top of the colored ball cluster. As weight increases, causing the cluster to slowly separate, it becomes more and more likely that the beads may fall through the cracks. Keep a steady hand, remain calm and carefully consider where to place your beads or else you'll make everything... TUMBALL!

SKILLS Dexterity



Tumball	<ul style="list-style-type: none"> • 7 Hangers • 4 Wands • 14 Colored Balls • 24 White Beads • Illustrated Rules 	<p>Watch video</p> 	<p>SINGLE: 10.6" x 10.6" x 2.6" / 1.1 LBS CASE (6): 11" X 11" X 16" / 7 LBS</p>	ITEM #09084	 <p>8 03979 09084 9</p>
---------	---	--	---	-------------	--



Beat the 8 Ball AGES 6 & Up | 2-4 PLAYERS

Launch the 8 ball into the funnel and let it spin like a coin in a spiral wishing well. It will eventually shoot down the scoring chute and the goal is to beat it with your own ball. When ready, each player launches their colored ball on their ramp. Be ready for some very intense seconds and watch all the balls crash to their final position to determine everybody's points!

SKILLS Focus & Attention



AWARDS

- MOM'S CHOICE GOLD
- TOTY GAME OF THE YEAR FINALIST
- ASTRA PLAY AWARD FINALIST
- CREATIVE CHILD MAGAZINE PREFERRED CHOICE
- CLAMOUR INFLUENCER CHOICE FAVORITE



Beat the 8 Ball

- 1 Playing Platform (1 funnel, 4 launching ramps and 1 scoring chute)
- 1 8 Ball
- 4 Colored Balls
- Illustrated Rules

Watch Video

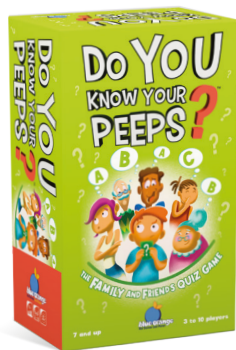


SINGLE: 10.5" x 10.5" x 4.25" / 1.17 LBS
CASE (6): 11.5" x 13.6" x 21.7" / 9 LBS

ITEM #09062



8 03979 09062 7



Do You Know Your Peeps?

AGES 7 & Up | 3-10 PLAYERS

Do You Know Your Peeps? is a fun trivia game filled with amusing questions for all ages that will challenge you, your friends, and your family to see if you really know each other. One player reads a question and three possible answers out loud, then all other players lock their answers, and the reader tries to guess everybody's response. With five categories (Favorites, School, Magic, Hobbies and Personality), and 200 questions, this game is packed with fun, covering everyday life... and unexpected situations!

SKILLS Social Play



AWARDS

- MOM'S CHOICE GOLD
- CREATIVE CHILD MAGAZINE GAME OF THE YEAR



Fifty Fruity

AGES 8 & Up | 2-6 PLAYERS

Successfully pick ripe bananas and coconuts and avoid getting stuck with an underripe hand! Draw two cards, and without looking at them, show them to your opponent. They will describe the cards to you, offering two truths or one truth and one lie. Will you call their bluff? Choose the card you think is the best and give them the other one. There's a 50/50 chance for success! Play your cards right and you might just beat the odds!

SKILLS Strategy



2Win

AGES 7 & Up | 2-6 PLAYERS

The goal is simple: create increasingly higher 2-digit numbers! The goal is simple: create increasingly higher 2-digit numbers! Each turn, pass a card to the player on your left then lay down a 2-digit number! Draw more cards if you have the highest number, show the most stars on your cards, play a number with 2 identical digits or line up 3 similar colors in a row. If you are unable to lay down a higher 2-digit number, you drop out of the game. Be the last one standing to win!

SKILLS Math | Strategy



Do You Know Your Peeps?	<ul style="list-style-type: none"> • 200 Question Cards • 27 ABC Cards • Illustrated Rules 	<p>SINGLE: 6.5" x 4" x 2.8" / 1.5 LBS CASE (6): 7.5" x 8.7" x 9.45" / 9.5 LBS</p>	ITEM #09067	
Fifty Fruity	<ul style="list-style-type: none"> • 63 Playing Cards • Illustrated Rules 	<p>Watch Video</p> <p>SINGLE: 3.75" x 5.9" x 1.6" / 0.5 LB CASE (12): 8" x 6" x 10" / 6.5 LBS</p>	ITEM #09306	
2Win	<ul style="list-style-type: none"> • 108 Playing Cards • Illustrated Rules 	<p>Watch Video</p> <p>SINGLE: 3.75" x 5.9" x 1.6" / 0.5 LB CASE (12): 8" x 6" x 10" / 6.5 LBS</p>	ITEM #09300	



Who Did It? AGES 6 & Up | 3-6 PLAYERS

The #1 card game about #2! In this hilarious game, race to get rid of all your cards to avoid the blame of owning the animal that pooped. Each game is as funny as it is fast; quickly find your card, be the first to throw it down, and then blame someone else's pet!

SKILLS Social Play | Memory



Slam Cup AGES 6 & Up | 2-4 PLAYERS

Match the cups then slam them down fast! Slam Cup is an intensely fast speed matching game. **Match the color on the inside of your cup to the color on the outside of the top cup on the stack.** Then slam your cup on top as fast as you can before someone beats you to it! The first player to stack all their cups is the winner!

SKILLS Focus & Attention | Social Play | Processing Speed



Who Did It?	<ul style="list-style-type: none"> • 36 Cards • 13 Poop Tokens • 1 Travel Pouch • Illustrated Rules 	SINGLE: 6.5"x 6"x 1" / 0.2 LB CASE (6): 9.65"x 7.68"x 7.09" / 2.27 LBS	ITEM #06400	 8 03979 06400 0
Slam Cup	<ul style="list-style-type: none"> • 24 Stacking Cups • 1 Base • 1 Starting Dice • Illustrated Rules 	watch video SINGLE: 8.9"x 5.5"x 3.4" / 0.98 LB CASE (6): 11.8"x 9.8"x 11.2" / 6.7 LBS	ITEM #09008	 8 03979 09008 5



Dr. Eureka

AGES 8 & Up | 1-4 PLAYERS

Mix the molecules, master the formula! Pick a challenge card, three test tubes, and six colorful balls to solve Dr. Eureka's scientific formulas. Move your materials from tube to tube, and position the balls as illustrated on the challenge card. Be careful to not drop them! Play this hands-on brain teasing race with friends or by yourself.

SKILLS Logic | Fine Motor | Focus & Attention | Processing Speed



AWARDS

- ASTRA BEST TOYS FOR KIDS
- CREATIVE CHILD MAGAZINE'S GAME OF THE YEAR
- OPPENHEIM PLATINUM SEAL
- MAJOR FUN



Dr. Eureka	<ul style="list-style-type: none"> • 12 Test Tubes • 24 Colorful Balls (8 Red, 8 Purple, 8 Green) • 54 Challenge Cards • Illustrated Rules 	<p>Watch video</p> 	<p>SINGLE: 10.4"x 10.4"x 2.4" / 1.6 LBS CASE (6): 15"x 11.2"x 11.8" / 11 LBS</p>	ITEM #03300	 <p>8 03979 03300 6</p>
------------	--	--	--	-------------	--

Party Games

Make game night fun with inclusive crowd pleasers



Blind Jack AGES 12 & Up | 2-12 PLAYERS

Exercise your memory and trivia knowledge to lead your team to 21!

In this blind betting game, quiz cards have a hidden answer between 0 and 10. Draw a card, estimate the numbered answer, show the answer to your opponents then decide if your team will keep this card to improve your chances of getting closer to 21. Keep track of the estimated value of your cards and the true value of your opponent's hand when deciding to hit or pass. Will you bust and break or qualify as the Ultimate Quiz Whizzes?



Patata! AGES 8 & Up | Unlimited PLAYERS

Discover the hot potato game where thinking fast will save you from being fried! Mash the competition with your quick quips and always have an a-peeling phrase at the ready so you can toss the potato to your friends!

SKILLS Social Skills | Creative Thinking



18+ VERSION AVAILABLE PAGE 74
(THE DARKER SIDE)

Blind Jack	<ul style="list-style-type: none"> • 200 Cards • Illustrated Rules 	Watch Video 	SINGLE: 3.75" x 5.9" x 1.6" / 0.24 LB CASE (12): 10.8" x 8.5" x 7.4" / 3.27 LBS	ITEM #09307	
Patata!	<ul style="list-style-type: none"> • 1 Foam Potato • 100 Double-Sided Theme Cards • 9 Topping Cards • Illustrated Rules 	Watch Video 	SINGLE: 6" x 7.75" x 1.9" / 0.35 LB CASE (6): 13" x 6.3" x 7.1" / 2.4 LBS	ITEM #09094	



Slingz AGES 10 & Up | 2-7 PLAYERS

Wild times guaranteed! Deal 5 letters to each player and reveal a theme. All players rush to find words that fit the theme and begin with one of their letters. They sling their card saying the word and look for more until 3 words are found. Then a new theme is revealed. The first to put down their 5 letters wins the round! This game encourages good humor, quick fire responses and fast action!

SKILLS Creativity | Speed



BOTTLE

BOOK



Slingz

- 280 Cards
- Illustrated Rules

Watch video

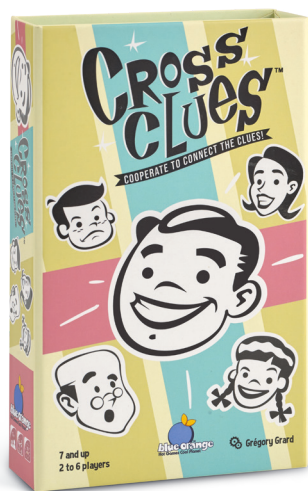


SINGLE: 7.2" x 2.7" x 2.2" / 1.1 LBS
CASE (6): 7.5" x 6.1" x 8.5" / 6.8 LBS

ITEM #09082



8 03979 09082 5

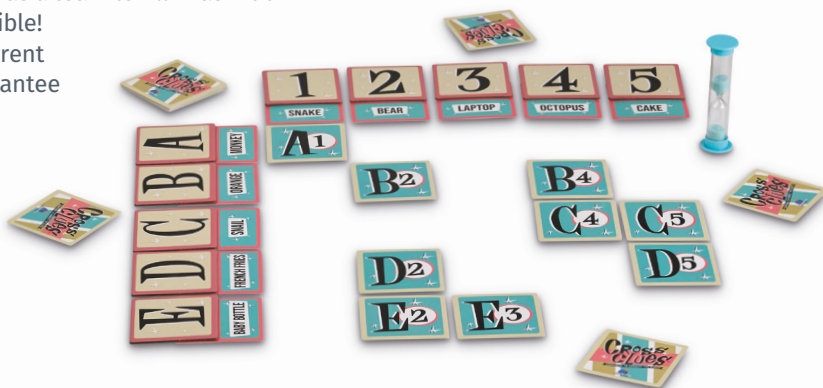


Cross Clues

AGES 7 & Up | 2-6 PLAYERS

Cross Clues is a cooperative party game about making connections between clues. **Work together to fill in the grid of code words by giving single word clues that represent the crossing of two different code words in the grid.** Consider your clues carefully and think as a team to fill in as much of the grid as possible! Thousands of different combinations guarantee endless fun!

SKILLS Social Play | Cooperation | Logic | Creativity | Speech & Language



Link City

AGES 8 & Up | 2-6 PLAYERS

Come together and cooperatively build community in this city-building game. As city expansion is approved and starter tiles are laid, the mayor secretly decides where to build new amenities or businesses. Will all other players be able to collectively guess what the mayor has in mind, linking tiles to create tree-lined streets? Make the right connections and watch as a unique and quirky city emerges before your eyes!

SKILLS Social Play | Cooperation | Speech & Language



AWARDS

- DICE TOWER SEAL OF EXCELLENCE
- GAME BOY GEEK
- GENCON TOP 10

Cross Clues	<ul style="list-style-type: none"> • 10 Axis Tiles • 25 Clue Cards • 50 Code Word Cards • 1 Sand Timer (5 Minutes) • Illustrated Rules 	<p>Watch video</p>	<p>SINGLE: 7.1" x 4.3" x 1.6" / 0.62 LB CASE (12): 8.1" x 9.2" x 10.2" / 8 LBS</p>	ITEM #09016	
Link City	<ul style="list-style-type: none"> • 72 Tiles • 4 Construction Cones • 1 City Hall Screen • Illustrated Rules 		<p>SINGLE: 8.2" x 6.3" x 2" / 0.73 LB CASE (6): 9" x 7" x 12.5" / 5 LBS</p>	ITEM #09086	



Burger ASAP!

AGES 7 & Up | 2-5 PLAYERS

The fast-flipping, burger building game! In this fast matching game, take your set of double sided ingredient cards and start making burgers! Race to flip the cards and arrange them in the proper order to recreate the recipes one at a time and earn points based on their difficulty level. This brain teasing game is a fun way to test your speed, memory and logic skills!

SKILLS Logic | Processing Speed | Focus & Attention



Beagle or Bagel?

AGES 7 & Up | 2-6 PLAYERS

Who knew sleeping dogs and bagels could have such striking similarities? Flip cards fast and be the first to call out "Beagle" or "Bagel" depending on which one is showing the most on the table... **after a while you won't know if you are looking at a furry friend in a ball, or a yummy bread roll!** This goofy card game offers three ways of playing to challenge your visual perception in fun and unpredictable ways!

SKILLS Visual Perception | Processing Speed



Bag of Chips

AGES 8 & Up | 2-5 PLAYERS

Bag of Chips is a party game in which you will face crucial choices to ensure maximum points. **Bet on which chips will come next, then draw from the bag!** Be careful, if you're too daring, you can lose a lot. Each round lasts only a few minutes. You can quickly become addicted to this push-your-luck game!

SKILLS Strategy | Social Play



Burger ASAP!	<ul style="list-style-type: none"> • 55 Order Cards • 35 Ingredient Cards • Illustrated Rules 	<p>Watch video</p>	<p>SINGLE: 4.7" x 4.7" x 2.5" / 0.4 LB CASE (6): 6" x 11" x 8.5" / 2.8 LBS</p>	<p>ITEM #MIXBUR01US</p>	<p>3 558380 099789</p>
Beagle or Bagel?	<ul style="list-style-type: none"> • 80 Cards • 10 Tokens • 24 Life Points • Illustrated Rules 		<p>SINGLE: 6" x 4.2" x 1.4" / 0.55 LB CASE (12): 8.75" x 6.5" x 8.9" / 7 LBS</p>	<p>ITEM #07301</p>	<p>8 03979 07301 9</p>
Bag of Chips	<ul style="list-style-type: none"> • 36 Cards • 25 Chips Tokens • 16 Victory Tokens • 4 Board Cards • Illustrated Rules 	<p>Watch video</p>	<p>SINGLE: 7.4" x 5.3" x 1.2" / 0.4 LB CASE (7): 7.5" x 6.3" x 9" / 3.8 LBS</p>	<p>ITEM #MIXBOC01US</p>	<p>3 558380 099550</p>

Classic Games

Fan favorites that have been a big part of our success story

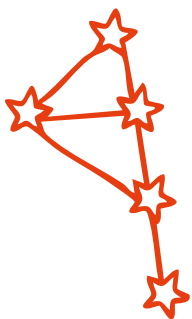


Fastrack

AGES 5 & Up | 2 PLAYERS

Ready, aim, score! In Fastrack, each player uses the elastic band to send their five discs zooming through a tiny slot to the other side of the track. Players need to work fast and aim well as they simultaneously fire at each other. The player who sends all ten discs to their opponent's side wins!

SKILLS Focus & Attention | Fine Motor



AWARDS

- OPPENHEIM PLATINUM SEAL
- ASTRA BEST TOYS FOR KIDS NOMINEE
- TOY INDUSTRY ASSOCIATION TOY OF THE YEAR NOMINEE
- MAJOR FUN AWARD
- PARENTS' CHOICE FOUNDATION APPROVED



Fastrack Mini

AGES 5 & Up | 2 PLAYERS

This mini version takes all the fun of the original rapid-action shooting game, and packs it into a smaller design. **It's perfect for on-the-go entertainment!**

SKILLS Focus & Attention | Fine Motor



Fastrack	<ul style="list-style-type: none"> • 1 Wooden Track • 10 Wooden Discs • Illustrated Rules • 1 Pouch 	<p>SINGLE: 14" x 8.5" x 1.5" / 1.2 LBS</p> <p>CASE (6): 9" x 10" x 14.8" / 8 LBS</p>	ITEM #00480	<p>8 03979 00480 8</p>
Fastrack Mini	<ul style="list-style-type: none"> • 1 Wooden Track • 8 Wooden Discs • Illustrated Rules 	<p>SINGLE: 9.4" x 6.1" x 1" / 0.45 LB</p> <p>CASE (12): 10" x 6.5" x 12.5" / 6.2 LBS</p>	ITEM #00482	<p>8 03979 00482 2</p>

Bendomino

AGES 6 & Up | 2-4 PLAYERS

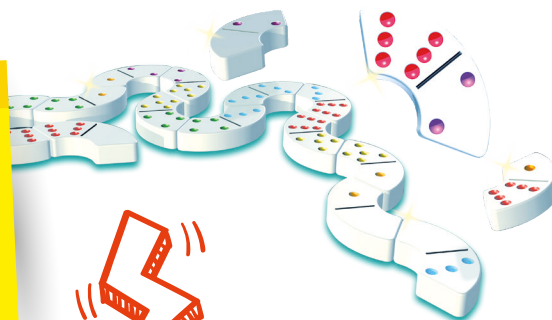
Now featuring a refreshed look with a sleek blue color and steady cardboard box, Bendomino is back in style! The game plays just like traditional dominoes, but its unique curved shape adds a clever twist: tiles must both match and fit. Watch as the pieces bend and wind into ever-changing patterns, creating a fresh visual every time you play. With its thrilling mix of luck and strategy, Bendomino guarantees fun for all ages!

SKILLS Visual Perception | Math



AWARDS

- OPPENHEIM PLATINUM SEAL
- DR. TOY 10 BEST GAMES
- CREATIVE CHILD SEAL OF EXCELLENCE



Double Shutter

AGES 8 & Up | 1-4 PLAYERS

Shut the super box! Each turn, knock down a combination of numbered tiles that add up to the value of the dice you just rolled. The round ends when no tiles remain that are equal to the value of the dice, and the player with the lowest total of leftover tiles wins. Look no further for solo entertainment, exciting competition, or a cooperative challenge.

SKILLS Strategy | Math



AWARDS

- DR. TOY BEST VACATION PRODUCTS
- PARENTS' CHOICE APPROVED
- TILLWIG BEST FAMILY FUN
- OPPENHEIM PLATINUM



Bendomino	<ul style="list-style-type: none"> • 28 Bendominoes • Illustrated Rules 	SINGLE: 11" x 5" x 1.5" / 1.3 LBS CASE (6): 12" x 10.5" x 7.5" / 10 LBS	ITEM #00240	
Double Shutter	<ul style="list-style-type: none"> • 2 Dice • Felted Tray • Illustrated Rules 	SINGLE: 9" x 7.8" x 2.3" / 1.4 LBS CASE (6): 16" x 10" x 10" / 10 LBS	ITEM #00291	



Yamslam

AGES 8 & Up | 1-4 PLAYERS

The fresh new take on a dice rolling classic! In this game, calculated risk and smart strategizing will place the odds in your favor. Roll the dice to get a combination that gives you the greatest advantage. Each combination has a different point value, but only four chips to let you score, so grab the best ones before they run out!

SKILLS Strategy | Math



AWARDS

- TEACHERS' CHOICE FOR THE FAMILY
- TILLYWIG FAMILY FUN
- PLAY ADVANCES LANGUAGE



Pocket Yamslam

AGES 8 & Up | 1-4 PLAYERS

The travel edition of Yamslam may come in a small package, but it guarantees big fun! The convenient tray and lid keep all the pieces in place, so it's perfect for everything from dinner parties to camping trips.



Yamslam	<ul style="list-style-type: none"> • 5 Dice • 28 Chips • Felted Tray • Illustrated Rules 	<p>SINGLE: 9.5"x 9.5"x 1.5" / 1 LB</p> <p>CASE (6): 10"x 10"x 12" / 9 LBS</p>	ITEM #00300	<p>8 03979 00300 9</p>
Pocket Yamslam	<ul style="list-style-type: none"> • 5 Dice • 28 Chips • 1 Dice Tray • Illustrated Rules 	<p>SINGLE: 4.75"x 4.75"x 1.2" / 0.35 LB</p> <p>CASE (12): 8.2"x 5"x 10.5" / 5 LBS</p>	ITEM #00303	<p>8 03979 00303 0</p>



Snip Snap!

AGES 7 & Up | 2-6 PLAYERS

Snip Snap! is the fast action dice matching game that will get your head spinning! **Roll the dice and race to be the first to find a match between your dice and your opponents' dice.** See two sharks? Call out "SHARK SNAP!" and snatch them fast to win!

SKILLS Focus & Attention | Social Play | Visual Perception | Processing Speed



AWARDS
• OPPENHEIM
PLATINUM SEAL

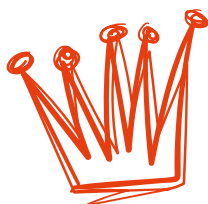


Flash!

AGES 7 & Up | 2-6 PLAYERS

The lightning fast dice game! Players race to roll dice combinations and rack up the most points. Try not to blink, because any player could score in a flash! The good times keep rolling with simple and quick game variations. Tote the game in the travel pouch for electrifying fun on the go.

SKILLS Processing Speed | Math



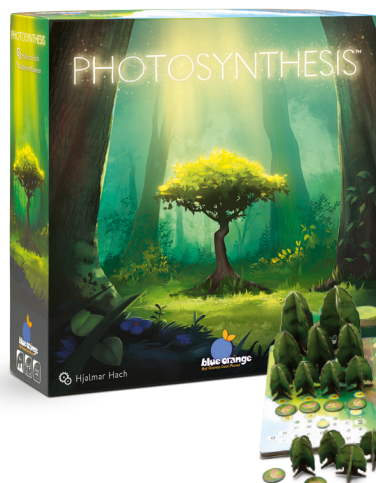
AWARDS
• DR. TOY BEST VACATION PRODUCTS
• PARENTS' CHOICE APPROVED
• TILLWIG BEST FAMILY FUN
• MAJOR FUN



Snip Snap!	<ul style="list-style-type: none"> • 36 Dice • 1 Travel Bag • Illustrated Rules 	<p>Watch video</p> 	<p>SINGLE: 4.7"x2"x1.4" / 0.4 LB CASE (12): 9"x5.3"x7.1" / 6.3 LBS</p>	ITEM #09000	
Flash!	<ul style="list-style-type: none"> • 36 Dice • 6 Scoring Chips • 1 Scoring Pad • 1 Travel Bag • 1 Pencil • Illustrated Rules 	<p>Watch video</p> 	<p>SINGLE: 9.5"x9.5"x2.3" / 2 LBS CASE (6): 10"x10.6"x14.4" / 13 LBS</p>	ITEM #00600	

Strategy Games

High quality components, strategy and interesting twists for more experienced players



Photosynthesis AGES 8 & Up | 2-4 PLAYERS

Plant and shape the ever-changing forest as you cultivate your seeds, and your strategy, in this beautifully themed abstract strategy game. Take your trees through their life cycles, from seedlings to full bloom to rebirth, and earn points as their leaves collect energy from the revolving sun's rays. Carefully pick where you sow and when you grow as trees in the shadows are blocked from light, and from points.



AWARDS

- MENSA SELECT
- ASTRA BEST TOYS FOR KIDS
- BOARDGAMEGEEK GOLDEN GEEK
- DICE TOWER BEST BOARD GAME PRODUCTION
- GEEKDAD GAME OF THE YEAR FINALIST
- MAJOR FUN SPIEL OF APPROVAL
- DICE TOWER TOP 10 HOLIDAY GAMES



Under the Moonlight: Expansion AGES 10 & Up | 2-4 PLAYERS

Enhance the world of Photosynthesis with the Under the Moonlight expansion! The moon turns in the opposite direction of the sun and casts its moonlight into the woods. **Players collect lunar points for their new forest animal to activate special powers.** Which one of the eight animals will be yours? The boar collects trees, the hedgehog plants seeds, the fox steals and moves seed around, the owl turns lunar points into sun points... Strategically position your animal by the moonstones, activate their capabilities at the right time, and beware of the majestic shadow of the Great Elder Tree! This expansion requires the base game Photosynthesis to play.



Photosynthesis	<ul style="list-style-type: none"> • 1 Game Board • 1 Sun Segment • 4 Player Boards • 1 First Player Token • 24 Scoring Tokens 	<ul style="list-style-type: none"> • 4 Sun Marker Tokens • 24 Seed Tokens • 32 Small Trees • 16 Medium Trees • 8 Large Trees • Illustrated Rules 		<p>SINGLE: 11.5" x 11.5" x 3.5" / 4.2 LBS CASE (4): 12" x 12" x 15" / 19 LBS</p>	ITEM #05400	
Under the Moonlight: Expansion	<ul style="list-style-type: none"> • 1 Great Elder Tree • 1 Full Moon/Half Moon Token • 1 Moon Phase Tracker • 8 Animal Meeples • 4 Lunar Point Trackers 	<ul style="list-style-type: none"> • 1 Dam Tile • 8 Baby Turtle Tokens • 3 Moonstones • Illustrated Rules 		<p>SINGLE: 10.4" x 5.1" x 1.6" / 1LB CASE (6): 10.9" x 10.7" x 5.3" / 6.5LBS</p>	ITEM #05401	



Gobblet! AGES 7 & Up | 2 PLAYERS

This beautiful wooden game takes just seconds to learn, but a lifetime to master. The goal is to line up four of your pieces in a row on the checkered board. You can take your opponent's place by covering their piece with a larger one, and can move your pieces around the board - just be sure to remember what is underneath!



AWARDS

- OPPENHEIM PLATINUM SEAL
- PARENTS' CHOICE SILVER
- NAPPA GOLD
- ASTRA TOP 20 TOYS
- MAJOR FUN AWARD
- PARENT'S CHOICE FOUNDATION SILVER



Gobblet!	<ul style="list-style-type: none"> • 1 Wooden Playing Board • 24 Wooden Pieces • 1 Wooden Box • Illustrated Rules 	SINGLE: 9.5"x 9.5"x 2.3" / 2.2 LBS CASE (6): 10"x 10.6"x 14.4" / 15 LBS	ITEM #00100	 8 03979 00100 5
----------	---	--	-------------	---------------------



Kingdomino AGES 8 & Up | 2-4 PLAYERS

Dominoes with a kingdom building twist! Each turn, connect a new domino to your kingdom, making sure at least one of its sides connects to a matching terrain type already in play. The tile selection is clever: the order of who picks first depends on the last round's selections. Make sure to secure tiles with crowns to multiply the worth of your kingdom at the end of the game. When each player has completed a 5x5 grid, the game ends and points are counted. **Kingdomino** was voted "Game of the Year" in many European countries, including Germany where it won the coveted Spiel des Jahres award.



Kingdomino - The Lost Treasures Expansion

AGES 8 & Up | 2-4 PLAYERS

Celebrate 10 years of Kingdomino with a treasure-filled new way to play!

This expansion adds 16 Lost Treasure tokens, introducing exciting new twists and strategic choices to the beloved Kingdomino experience. Whenever a player places a domino that forms a square of four different landscapes, they discover a treasure! The treasure token is placed on top of the tiles at the intersection of those four landscapes. Each token is divided into four quarters, showing crowns which will boost the value of adjacent terrains.



AWARDS

- SPIEL DES JAHRES
- MAJOR FUN
- ASTRA BEST TOYS FOR KIDS
- GEEKDAD GAME OF THE YEAR FINALIST
- GAMES MAGAZINE GAME OF THE YEAR
- MENSA RECOMMENDED
- THE DICE TOWER SEAL OF EXCELLENCE
- GAME BOY GEEK SAXOPHONE SERENADE



Kingdomino	<ul style="list-style-type: none"> • 4 3D Castles • 48 Dominoes • 8 Wooden King Tokens • 1 Score Pad • Illustrated Rules 	SINGLE: 7.9" x 7.9" x 2" / 1.4 LBS CASE (6): 8.5" x 8.7" x 12.6" / 9.1 LBS	ITEM #03600	 8 03979 03600 7
Kingdomino - The Lost Treasures Expansion	<ul style="list-style-type: none"> • 16 Tokens • 2 Cards 	SINGLE: 2.6" x 3.5" x 0.4" / 0.06 LB CASE (12): 3" x 3.9" x 5" / 1LB	ITEM #09338	 8 50076 93219 0



Queendomino

AGES 8 & Up | 2-4 PLAYERS

Explore and conquer different terrains in this tile-laying family strategy game. Tax your lands wisely, pick the buildings you erect carefully, and try to win the Queen's favor - all while making sure your plans aren't foiled by the Dragon's flame. **This game is both a standalone and an expansion of the 2017 Spiel des Jahres recipient, Kingdomino.** It offers more complex challenges, a new territory, and a way for more players to participate.



Dragomino

AGES 5 & Up | 2-4 PLAYERS

Dragomino is the children's version of Kingdomino. **Young players build their own kingdom and as they match different landscapes they try to collect as many eggs as possible.** The eggs might be empty, or hide an adorable baby dragon!

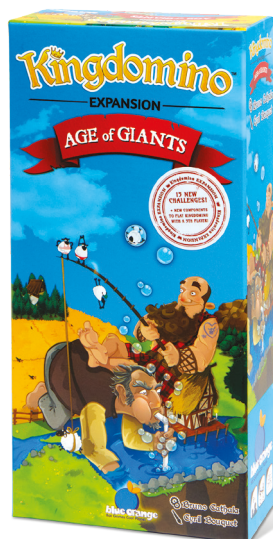


AWARDS

- GAMEBOY GEEK CHILDREN'S GAME OF THE YEAR
- MENSA RECOMMENDED
- KINDERSPIEL DES JAHRES
- AS D'OR - GAME OF THE YEAR



Queendomino	<ul style="list-style-type: none"> • 4 Starting Tiles • 4 3D Castles • 48 Dominoes • 32 Building Tiles • 1 Builders' Board • 8 King Meeples 	<ul style="list-style-type: none"> • 22 Knight Meeples • 15 Towers • 42 Coins • 1 Queen Meeple • 1 Dragon Meeple • 1 Scoring Pad • Illustrated Rules 	<p>SINGLE: 10.4"x10.4"x2.4" / 2.5 LBS CASE (6): 11"x11"x15" / 16 LBS</p>	ITEM #03601	
Dragomino	<ul style="list-style-type: none"> • 28 Exploration Dominoes • 69 Egg Tokens • 1 Mommy Dragon Meeple • 4 Starting Dominoes • Illustrated Rules 		<p>SINGLE: 10.2"x7.9"x2.4" / 1.3 LBS CASE (6): 15.7"x11.5"x9.4" / 9 LBS</p>	ITEM #09011	



Age of Giants: Expansion

AGES 8 & Up | 2-5 PLAYERS

This expansion allows for a fifth player to join in on a Kingdomino or Queendomino game, and adds more player interaction. **A giant meeple covers up a crown and cancels its value, but a tile with giant footsteps on allows a player to pass its giant meeple on to another player.** Challenge tiles are drawn at the beginning of each game to make each experience unique and to add replay value.



Kingdomino Origins

AGES 8 & Up | 2-4 PLAYERS

Kingdomino Origins plays similarly to the original game but introduces new components for additional actions and new ways to score points. **Regions in your territory** will earn you points if they contain fire. Fire is either part of your terrains, or earned by adding dominoes with volcanoes. Go back in time to the prehistoric era of Kingdomino!



Age of Giants: Expansion	<ul style="list-style-type: none"> 1 Domino Dispenser 1 Score Pad 12 Dominoes 17 Challenge Tiles 	<ul style="list-style-type: none"> 6 Wooden Giants Meeples 1 3D Castle & 1 Starting Tile 2 Wooden King Tokens Illustrated Rules 	SINGLE: 10.4" x 5" x 2.25" / 12 LBS CASE (6): 5.5" x 11" x 14" / 8 LBS	ITEM #03603	
Kingdomino Origins	<ul style="list-style-type: none"> 4 Starting Tiles 4 3D Huts 8 Tribe Chiefs 48 Dominoes 1 Cave Board 22 Caveman Tiles 	<ul style="list-style-type: none"> 4 Starting Tiles 4 3D Huts 8 Tribe Chiefs 48 Dominoes 1 Cave Board 22 Caveman Tiles 	SINGLE: 10.4" x 7.8" x 2.4" / 1.9 LBS CASE (6): 15.3" x 11.4" x 9.1" / 11 LBS	ITEM #09039	



Planet

AGES 8 & Up | 2-4 PLAYERS

A world is taking shape in the palm of your hands. **Take on the role of super beings and compete to create perfect worlds with the ideal conditions for wildlife to flourish.** In this very unique game, each player's board is a 12-sided 3-dimensional planet core. Throughout 12 turns, select landscape tiles representing oceans, deserts, mountains or frozen lands, and arrange them on your planet to create the best ecosystems. Win Animal Cards while fulfilling your own "Natural Habitat" objective and create the most populated planet in the universe!



AWARDS

- MENSA SELECT
- ASTRA BEST TOYS FOR KIDS
- DICE TOWER SEAL OF EXCELLENCE
- DICE TOWER TOP 10 FAMILY GAMES OF 2018
- DICE TOWER TOP 10 INNOVATIVE GAMES OF 2018






Shadow House Masquerade

AGES 8 & Up | 3-8 PLAYERS

Quick! Someone has been murdered and the killer is in our midst. The curtains are drawn, the doors are closed, and all players wear masks! In this fast-paced bluffing card game, are you an innocent or are you the culprit, attempting to stay hidden? Players beware... Roles can easily change and the player who is the culprit can pass this identity to another player. This is a game of deduction where anyone can be the villain...



Planet	<ul style="list-style-type: none"> • 4 Planet Cores • 50 Magnetic Continent Tiles • 45 Animal Cards • 5 Natural Habitat Objective Cards • 1 First Player Token • Illustrated Rules 	 SINGLE: 11.5" x 11.5" x 3.5" / 2.5 LBS CASE (4): 12.8" x 13.2" x 14.7" / 12.2 LBS	ITEM #07700	 8 03979 07700 0
Shadow House Masquerade	<ul style="list-style-type: none"> • 36 Point Tokens • 1 Handcuffs Token • 36 cards • Illustrated Rules 	SINGLE: 4.7" x 3.1" x 1.6" / 0.5 LB CASE (12): 5" x 6.5" x 10" / 6.5 LBS	ITEM #09088	 8 03979 09088 7

Next Station London

AGES 8 & Up | 1-4 PLAYERS

You have been hired by the City of London to redesign their underground lines. **Each turn, reveal a new station and create a railway section to expand your subway line.** Optimize the number of districts you connect, the tourist sites you access, and take advantage of the tunnels passing under the Thames River to score the most points. Sketch four underground subway lines and become the best railway architect in this fun flip-and-write game!



Next Station London

- 200 Sheets Scorepad
- 20 Cards
- 4 Color Pencils
- Illustrated Rules

Watch video



SINGLE: 7.1" x 4.3" x 1.6" / 0.95 LB
CASE (12): 8.1" x 9.2" x 10.2" / 15 LBS

ITEM #09050



8 03979 09050 4

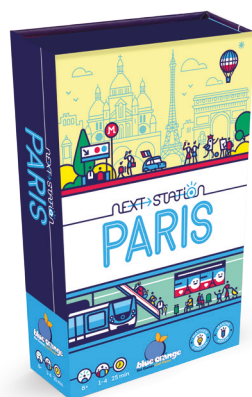
4+



Next Station Tokyo

AGES 8 & Up | 1-4 PLAYERS

Travel to the city of Tokyo, Japan and compete to redraw their metro plans in order to meet the tourist challenges of tomorrow. **Each turn you will reveal the next station card and draw a subway line on your map.** You will have to optimize your network to collect a maximum number of stamps and stay connected to the central green loop to earn as many points as possible! This flip-and-write game follows the highly acclaimed Next Station London released in 2022 with a similar mechanic and all new challenges!



Next Station Paris

AGES 8 & Up | 1-4 PLAYERS

The newest addition to our Next Station series welcomes you to the City of Light! Next Station Paris combines familiar play elements found in Next Station London and Next Station Tokyo while also offering additional twists. Players will continue to flip station cards and draw subway lines on their maps, but now they will need to utilize bridge crossings, visit the French capital's iconic monuments, all while taking advantage of the central platform, the busiest station on the network! Who will be the best designer of the Parisian metro? **Optimize your four sketched subway lines over all Paris districts in order to win!**



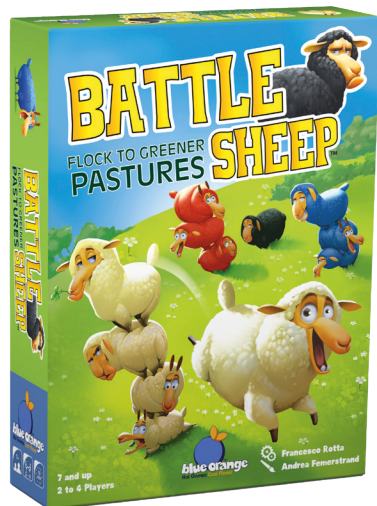
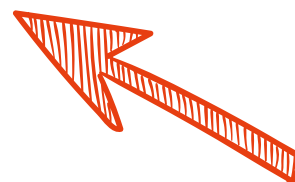
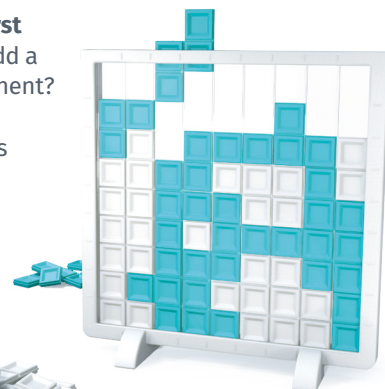
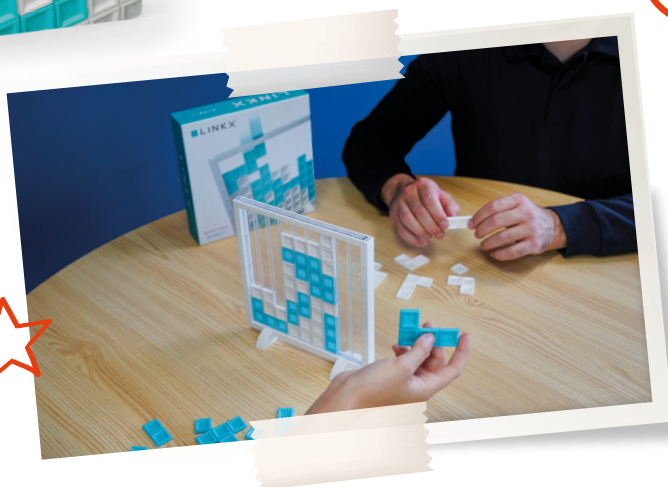
Next Station Tokyo	<ul style="list-style-type: none"> • 200 Sheets Scorepad • 24 Cards • 4 Color Pencils • Illustrated Rules 	Watch Video 	SINGLE: 7.1" x 4.3" x 1.6" / 1.05 LBS CASE (12): 8.1" x 9.2" x 10.2" / 12.5 LBS	ITEM #09074	 8 03979 09074 0
Next Station Paris	<ul style="list-style-type: none"> • 200 Sheets Scorepad • 24 Cards • 4 Color Pencils • Illustrated Rules 	Watch Video 	SINGLE: 7.1" x 4.3" x 1.6" / 1.05 LBS CASE (12): 8.1" x 9.2" x 10.2" / 12.5 LBS	ITEM #09079	 8 03979 09079 5



Linkx AGES 6 & Up | 2 PLAYERS

Strategically place your Tetris-like tiles and be the first to connect two opposite edges of the grid. Will you add a piece to grow your own line or try to block your opponent? Your strategy might change directions during this surprisingly addictive 2-player game. Plan your moves wisely to chart your path to victory!

SKILLS Strategy



Battle Sheep AGES 7 & Up | 2-4 PLAYERS

Flock to greener pastures! Each turn, players split their stack of sheep and then move a portion by placing it as far as it can go in a straight line. Plan your moves carefully to fence out your rivals and occupy the most pastures. With multiple game board configurations, it's different every time you play!



AWARDS

- PARENTS' CHOICE RECOMMENDED
- SPIEL DES JAHRES RECOMMENDED
- MENSA RECOMMENDED
- THE DICE TOWER SEAL OF EXCELLENCE

Linkx	<ul style="list-style-type: none"> • 1 Vertical Board • 28 Tiles • Illustrated Rules 	Watch video 	SINGLE: 8.7" x 8.7" x 1.75" / 1.3 LBS CASE (6): 9" x 9" x 10.5" / 7.8 LBS	ITEM #09099	
Battle Sheep	<ul style="list-style-type: none"> • 16 Pasture Boards • 64 Wooden Sheep Tokens • Illustrated Rules 	SINGLE: 10.2" x 7.9" x 2.4" / 1.6 LBS CASE (6): 15.7 x 11.5" x 9.4" / 10.6 LBS		ITEM #00830	

Skill Toys & Outdoor

Exercise mind and body with trendy toys

Loopy Loooper Collection AGES 8 & Up

The Loopy Loooper is a fidget toy perfect for fidgeters of all ages! Hold the round object vertically, launch the marble in its groove with a quick flick of your wrist and find the right rhythm to keep the marble spinning. The magic of centrifugal force will keep the marble from dropping. The collection is inspired by the Japanese Ensō circle. The Ensō is created in a moment where the artist frees their mind to allow their body to take full control over creation. The circle is used to stimulate the mind and encourage creative thinking. Get your Loopy Loooper spinning and your creative energy flowing!


www.loopylooper.com

SKILLS Fine Motor | Focus & Attention



• LOOPY LOOPER STARTER PACK (INCLUDES 24 GAMES AND 2 DISPLAYS)



Loopy Loooper Starter Pack	<ul style="list-style-type: none"> • 2 displays • 24 games 	ITEM #09105		
Loopy Loooper	<ul style="list-style-type: none"> • 1 Loopy Loooper • 2 Marbles • 1 Stand 	SINGLE: 6.2" x 4.1" x 1.5" / 0.13 LB CASE (12): 6.5" x 9.5" x 9.5" / 2.8 LBS	SEE PAGE 50	SEE PAGE 50



Loopy Looper Jump

Ready for a challenge? Take a leap with Jump! **This Loopy Looper requires seriously skillful spinning to get the marble jumping through the gap.** Find your rhythm and see how fast you can spin. Then jump to the next level and race your friends!



Loopy Looper Flow

Do you like to fidget? Then take Flow for a spin! This super spinning fidget toy is hypnotizingly fun! **Whether you want your marble to go dizzyingly fast or slow to snail speeds, you're totally in control.** Make your friends' heads spin with every turn and get into the Flow!



Loopy Looper Edge

Edge is a Loopy Looper that's off the rails! **With this Loopy Looper you'll need to find the perfect spin speed to keep your marble sticking to the rail.** Switch your speeds, race your friends and watch the marble go! It's gravity-defying fun!



Loopy Looper Hoop

This 2-in-1 Loopy Looper is twice the fun in one Hoop shaped loop! **Spin your marble and when you're ready, score a hoop by landing the marble in the basket.** Challenge your friends to a round of hoop shooting with Hoop! It's game on!



Loopy Looper Jump	ITEM #09100		Loopy Looper Edge	ITEM #09102	
Loopy Looper Flow	ITEM #09101		Loopy Looper Hoop	ITEM #09103	



Loopy Hoopies Collection AGES 6 & Up

Loopy Hoopies are marble spinners perfect for younger fidgeters! These skill fidgets have the same base concept as the original Loopy Loooper marble spinners but the ball stays safely sealed inside the loop so it's perfect for practicing spinning. All Loopy Hoopies contain a hoop so that once they've mastered spinning the ball in the loop, players can try to stop spinning at the right moment to shoot a hoop! With three colors to collect and a tactile rotating ring to fidget with, Loopy Hoopies are perfect for little ones!

SKILLS Fine Motors | Focus & Attention



Loopy Hoopies Blue

Be the star of the show with our blue Loopy Hoopies featuring a red spinning ring for fidgeting and the original Loopy Loooper ball to practice your hoops in style!



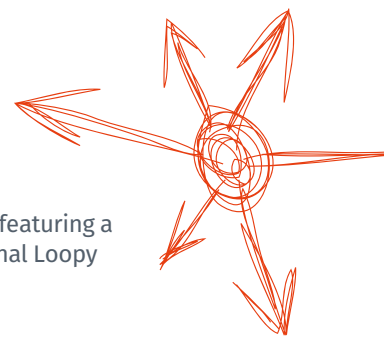
Loopy Hoopies Pink

Be tickled pink with our rosy Loopy Hoopies featuring a purple ring for a tactile fidgeting experience and the original Loopy Loooper ball to practice shooting hoops off the court!



Loopy Hoopies Green

Have fun and spin in the sun with our green Loopy Hoopies featuring a blue spinning ring to practice shooting hoops. Use the original Loopy Loooper marble to increase your hoop shooting skills!



Loopy Hoopies Blue	ITEM #09108	8 03979 09108 2	Loopy Hoopies Green	ITEM #09110	8 03979 09110 5
Loopy Hoopies Pink	ITEM #09109	8 03979 09109 9	<ul style="list-style-type: none"> • 1 Loopy Hoopies including a marble and a ring • 1 Stand 		SINGLE: 6.2"x 4.1"x 1.5" / 0.14 LB CASE (12): 6.5"x 9.5"x 9.5" / 2.8 LBS



Yo-Spin AGES 7 & Up | 1 PLAYER

Yo-Spin is a revolutionary fidget toy that combines the spinning power of a gyroscope with the freestyle play of a yo-yo. Slip on the ring, launch the disc, and perform smooth, gravity-defying tricks with the help of an ultra-stretchy elastic cord. Compact and lightweight, it's perfect for both indoor and outdoor play. Easy to learn and endlessly fun, Yo Spin brings flow and action right to your fingertips!

SKILLS Fitness | Fine Motor Skills



Yo-Spin	<ul style="list-style-type: none"> • 1 Yo-Spin • Illustrated Rules 	<p>Watch Video</p> 	<p>SINGLE: 8" x 5" x 4" / 0.5 LB CASE (12): 12.2" x 8.6" x 9.05" / 2 LBS</p>	ITEM #09324	 <p>8 50076 93205 3</p>
---------	--	--	--	-------------	--



ZipzyBall

AGES 7 & Up | 1 PLAYER

Insert your finger into the ring and toss the ball out in front of you. Alternate flicking, flipping, bouncing and throwing the ball with either your left or right hand.

SKILLS Fitness | Fine Motor Skills



FootzyBall

AGES 7 & Up | 1 PLAYER

Clip the ring onto your waistband, pull the ball down on its elastic string and start kicking! Alternate kicking with either your left or right foot.

SKILLS Fitness | Fine Motor Skills



ZipzyBall	<ul style="list-style-type: none"> • 1 Zipzy Ball • Illustrated Rules 	<p>Watch video</p>	<p>SINGLE: 8" x 5" x 4" / 0.5 LB CASE (12): 12.2" x 8.6" x 9.05" / 2 LBS</p>	ITEM #09090	
FootzyBall	<ul style="list-style-type: none"> • 1 Footzy Ball • Illustrated Rules 	<p>Watch video</p>	<p>SINGLE: 8" x 5" x 4" / 0.5 LB CASE (12): 12.2" x 8.6" x 9.05" / 2 LB</p>	ITEM #09089	



Swoobee

AGES 6 & Up | 2 to 8 PLAYER

Swoobee is a throwing game for two teams, perfect to play anywhere! Players toss swoobees — soft rope rings with a fabric center, easy to grip and throw — at cork targets placed at different distances to score 1, 2, or 3 points. The farther the target, the higher the score! You can also aim at your opponents' swoobees to make them lose points, adding a tactical twist. The first team to reach 21 points wins, but with every throw offering a tough choice, victory is never guaranteed. Lightweight, easy to carry, Swoobee guarantees fun wherever you play.

SKILLS Active Play, Visual Perception, Fine Motors

NEW



Swoobee

- 8 Swoobees
- 3 Cork Targets
- 1 Bag
- 1 Illustrated Rules

SINGLE: 7.6" x 7.6" x 6" / 2.7 LBS
CASE (6): 19.5" x 16.3" x 9.3" / 18.5 LBS

ITEM #09318



Displays



Cards Games

Holds 12 games format 3.75" x 5.9"



Bag of Chips

Holds 7 Bag of Chips pouches



Loopy Looper

Holds 12 Loopy Looper.



Burger ASAP!

Holds 6 Burger ASAP! boxes

Next Station

Holds 6 Next Station boxes.



Datata!

Holds 6 Patata! bags.



Super Genius

Holds 12 Super Genius boxes.



Fastrack Mini

Holds 6 Fastrack Mini boxes.



Who Did It?

Holds 6 Who Did It? pouches.



Flash!

Holds 8 Flash! Boxes.



Snip Snap!

Holds 12 Snip Snap! games.



Pocket Yamslam

Holds 12 Pocket Yamslams.



Scatter Brain

Holds 12 Scatter Brain tins.

Marketing Tools

Kingdomino Giant Version



Dr. Eureka Oversized Demo Game



GOODIES:

- Slingz Sample Pack
 - Cross Clues Sample Pack
 - Do You Know Your Peeps? Sample Pack
 - Next Station: Paris Expansion Pack: SPORTS
 - Blind Jack Sample Pack
 - The Darker Side Sample Pack
- (includes Analyze Me, Slingz 18+, and Shut Up!)



Host a Blue Orange supported event

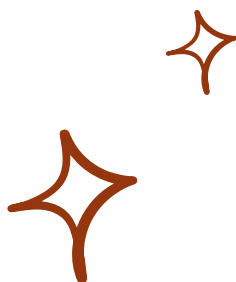
Planning a grand opening, a game night, or a special event? We can help!
We provide demo games, giveaways, sample packs, and social media support to make your event a success.

To request goodies or event assistance, contact: marketing@blueorangegames.com



iD VENTURE

iD Venture's exciting ClueBox collection offers brain teaser puzzles featuring a series of captivating logic challenges that must be solved step by step to unlock them. Designed for 1-2 players aged 14 and above, they are the perfect blend of fun and intrigue for all puzzle game enthusiasts. Now you can immerse yourself in an Escape Room experience that fits in the palm of your hand!





Cluebox 1: Schrodinger's Cat

AGES 14 & Up | 1-2 PLAYERS

Schrödinger's thought experiment states that a cat locked in a box with poison can be dead or alive. Will you be able to open this 3D puzzle and save Schrödinger's cat?



Cluebox 2: Davy Jones Locker

AGES 14 & Up | 1-2 PLAYERS

That old sea devil Davy Jones has locked the souls of dead sailors in a wooden box. Dive into the fascinating world of the sea legend and save the souls of the sailors!



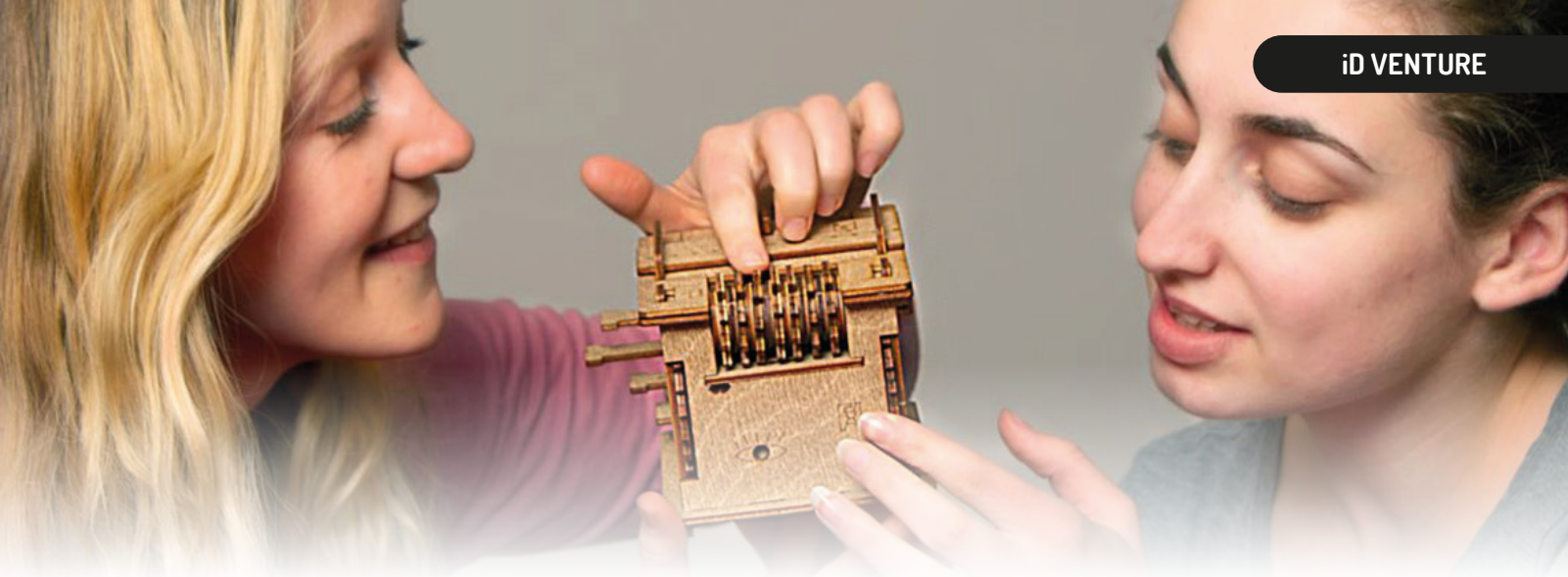
Cluebox 3: Nautilus

AGES 14 & Up | 1-2 PLAYERS

Legend says that Captain Nemo locked the secret of his submarine Nautilus in a wooden box. Will you be able to solve the mystery of the legendary captain?



Cluebox 1: Schrodinger's Cat	<ul style="list-style-type: none"> • 1 Cluebox • Illustrated Rules 	Watch Video 	SINGLE: 4.7" x 4.3" x 4.3" / 0.7 LB CASE (1)	ITEM #0785045811094	 0785045811094
Cluebox 2: Davy Jones Locker	<ul style="list-style-type: none"> • 1 Cluebox • Illustrated Rules 	Watch Video 	SINGLE: 4.7" x 4.3" x 4.3" / 1 LB CASE (1)	ITEM #0785045811124	 0785045811124
Cluebox 3: Nautilus	<ul style="list-style-type: none"> • 1 Cluebox • Illustrated Rules 	Watch Video 	SINGLE: 4.7" x 4.3" x 4.3" / 1 LB CASE (1)	ITEM #0048753820971	 0048753820971



Cluebox 4: The Trial of Camelot

AGES 14 & Up | 1-2 PLAYERS

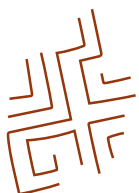
Sir Galahad, the son of Lancelot of Camelot, received this mysterious box from Merlin. Perhaps the contents will aid him on his legendary quest for the Holy Grail. Will you join this noble knight in solving the mystery of Camelot?







Cluebox 5: Cambridge Labrynth

AGES 14 & Up | 1-2 PLAYERS

The secret Cambridge Philosophical Society used this puzzle box to discover the most capable and clever of scientists. Test your abilities and solve the labyrinth to become a member of their elite inner circle!



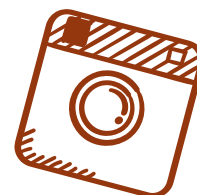
Cluebox 4: The Trial of Camelot	<ul style="list-style-type: none"> 1 Cluebox Illustrated Rules 	Watch Video 	SINGLE: 4.7" x 4.3" x 4.3" / 0.8 LB CASE (1)	ITEM #4270003036979	 4270003036979
Cluebox 5: Cambridge Labrynth	<ul style="list-style-type: none"> 1 Cluebox Illustrated Rules 	Watch Video 	SINGLE: 4.9" x 4.5" x 4.7" / 1.3 LBS CASE (1)	ITEM #4270003036955	 4270003036955



Cluebox 6: Sherlock's Camera

AGES 14 & Up | 1-2 PLAYERS

During the inventory in the Scotland Yard archives, a camera with mysterious symbols and locks was discovered. Can you solve the last mystery of the famous detective Sherlock Holmes? Open the camera and discover the identity of Sherlock's successor!



Cluebox 7: Pyramid of the Sun

AGES 14 & Up | 1-2 PLAYERS

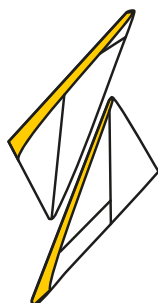
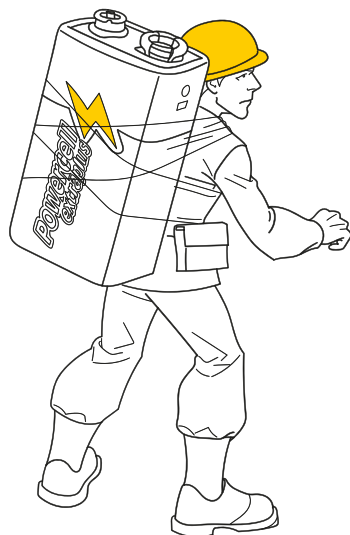
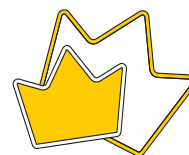
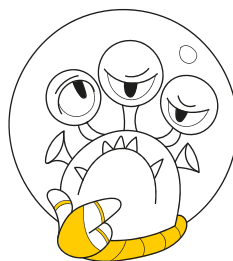
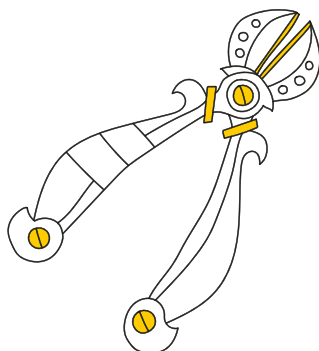
In the land of Teotihuacan stands The Pyramid of the Sun, one of the largest structures ever built in the ancient Americas. Within, there are rumored to be tunnel-like caves leading to a chamber where Mexican creation stories say the first humans emerged. Are you ready to enter the pyramid and travel to the underworld to unlock the secrets held within?



Cluebox 6: Sherlock's Camera	<ul style="list-style-type: none"> 1 Cluebox Illustrated Rules 	Watch Video 	SINGLE: 4.7" x 4.9" x 4.7" / 1.4 LBS CASE (1)	ITEM #4262400850036
Cluebox 7: Pyramid of the Sun	<ul style="list-style-type: none"> 1 Cluebox Illustrated Rules 	Watch Video 	SINGLE: 7.9" x 7.9" x 7.9" / 2 LBS CASE (1)	ITEM #4262400850197



IELLO's renowned catalog primarily caters to more mature gamers seeking deeper strategy and rich gameplay experiences, while also offering family-friendly titles perfect for those ready to take their game nights to the next level. Featuring acclaimed hits like King of Tokyo, a worldwide success, IELLO's games deliver excitement, challenge, and lasting replay value, making them a perfect complement to the Blue Orange line.





Fifty

AGES 8 & Up | 3-7 PLAYERS

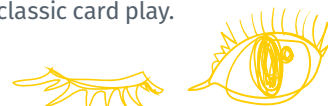
Fifty reinvents Bingo with a clever twist of strategy and suspense! Players secretly pick numbers from 1 to 50 and then join the count, trying to rack up points for as long as they can—unless another player jumps in to steal the sequence. With blocked numbers, smart choices, and unexpected interruptions, every round is a thrilling race to outwit opponents and claim victory!



Luz

AGES 8 & Up | 3-5 PLAYERS

Luz is a clever trick-taking game where the challenge lies in betting how many tricks you'll win—without ever knowing the true value of your own cards! Only your opponents can see your hand, and only you can see theirs, making every round a tense puzzle of deduction, bluffing, and intuition. Outsmart your rivals, manage your bets with precision, and shine the brightest in this unique twist on classic card play.



Fifty	<ul style="list-style-type: none"> • 1 Pad of Player Grids • 10 Blocked Tokens • 7 Score Tracks • 5 Danger Cards • 7 Beads • 7 Pencils 	<p>Watch video</p>	<p>SINGLE: 5.9" x 3.9" x 1.6" / 0.8 LB CASE (6): 9.8" x 4.3" x 6.3" / 5.1 LBS</p>	ITEM #70444	<p>3 701551 704443</p>
Luz	<ul style="list-style-type: none"> • 65 Cards • 20 Glass Beads • 1 Score Pad • 1 Rulebook 	<p>Watch video</p>	<p>SINGLE: 7.1" x 5.1" x 1.6" / 1 LB CASE (6): 9.8" x 10.4" x 7.9" / 5.8 LBS</p>	ITEM #70355	<p>3 701551 703552</p>



Time Bomb AGES 8 & Up | 4-8 PLAYERS

London, 1890. Moriarty has hidden a bomb inside Big Ben, and only Sherlock and his team can stop it. In this tense social deduction game, players are secretly split into two teams: Sherlock's detectives trying to defuse the bomb, and Moriarty's henchmen trying to set it off. Each round, players cut wires hoping to reveal the right ones — but choose wrong and disaster strikes. Fast, bluff-filled, and full of suspense, Time Bomb is a thrilling party game of hidden roles and clever persuasion.



NEW

Tick-Tock



Bunny Kingdom Town AGES 10 & Up | 2 PLAYERS

(Re)discover the beloved Bunny Kingdom universe in this brand-new, standalone game! Players compete to build and develop a thriving rabbit city, expanding their districts to earn ever more prestigious Golden Carrots. Featuring a new city-building mechanic, fresh artwork, and clever blocking strategies, Bunny Kingdom Town offers a faster, more tactical experience while preserving the charm and spirit of the original game.



NEW



Time Bomb	<ul style="list-style-type: none"> • 8 Role Cards • 40 Wire cards • 1 Wire Cutter Token • 1 Wire Cutter Card • 8 Round Markers • Illustrated Rules 	<p>watch video</p>	<p>SINGLE: 5.9" x 3.9" x 1.6" / 0.5 LB CASE (6): 9.8" x 4.3" x 6.3" / 3.3 LBS</p>	ITEM #70480	<p>3 701551 704801</p>
Bunny Kingdom Town	<ul style="list-style-type: none"> • 28 Wooden Rabbit Pawns • 5 Wooden Foreman Rabbit Pawns • 30 Coin Tokens • 16 Wood Tokens • 4 Bridge Tokens • 1 New Town Board 	<ul style="list-style-type: none"> • 1 Scoreboard • 30 Request Cards • 30 Building Tiles • 16 Upgrade Tiles • 25 Plan Cards • 6 Setup Cards 	<p>SINGLE: 8.1" x 8.1" x 2.4" / 1.8 LBS CASE (6): 8.5" x 8.5" x 14.8" / 11 LBS</p>	ITEM #70592	3701551705921



King of Tokyo

AGES 8 & Up | 2-6 PLAYERS

King of Tokyo is the smash-hit dice game of giant monsters and bigger laughs. Roll Yahtzee-style dice to attack, heal, gain energy, and control Tokyo—push your luck to be the last monster standing or race to 20 points. This award-winning, best-selling classic sparked a whole monsterverse, inspiring expansions, Monster Packs, special editions—making it a must-have for family nights and party tables alike.



King of Tokyo: Duel

AGES 8 & Up | 2 PLAYERS

King of Tokyo: Duel is a fast, head-to-head monster showdown built for two. Roll and re-roll dice to attack, heal, gain energy, and race up tug-of-war Fame and Destruction tracks to seize the crown—or knock your rival out first. Snappy turns, unique monsters, and a compact ~20-minute playtime make it a punchy 2-player take on the classic.



King of Tokyo	<ul style="list-style-type: none"> • 6 Cardboard Figures • 6 Monster Boards • 1 Tokyo Board • 6 Black Dice • 2 Green Dice • 66 Power Cards • 50 Energy Cubes • 28 Tokens • 1 Rulebook 	<p>Watch video</p>	<p>SINGLE: 10" x 10" x 2.9" / 2 LBS CASE (6): 17.5" x 10.8" x 11" / 12.6 LBS</p>	ITEM #51314	<p>3 760175 513145</p>
King of Tokyo: Duel	<ul style="list-style-type: none"> • 6 Monster Boards • 1 Board • 8 Dice • 2 Markers • 50 Power Cards • 2 Life Point Trackers • 13 Buzz Tokens • 4 Dice Tokens • 25 Energy Cubes • 1 Rulebook 	<p>Watch video</p>	<p>SINGLE: 8.1" x 6.3" x 2" / 1.2 LBS CASE (12): 13" x 8.9" x 7.5" / 8.3 LBS</p>	ITEM #70302	<p>3 701551 703026</p>



King of Tokyo Duel: Baby Gigazaur Booster AGES 8 & Up

Add extra bite to your King of Tokyo: Duel battles with Baby Gigazaur! This exclusive promo monster brings new energy-draining abilities to the fight: steal Energy from your opponent, or deal damage if they can't pay up. Now available as a booster pack, Baby Gigazaur is the perfect way to expand your Duel experience with a fan-favorite monster.



King of Tokyo: Even More Wicked AGES 8 & Up




King of Tokyo: Even More Wicked lets you add the Wickedness Gauge from Dark Edition to any game—earn Wickedness with 1s and 2s, unlock powerful Wickedness tiles, and supercharge your monster's rampage. (Requires King of Tokyo base game.)



King of Tokyo: Mindbug AGES 8 & Up | 2-6 PLAYERS

King of Tokyo: Mindbug opens portals over Tokyo and unleashes mischievous, tentacled Mindbugs to shake up your battles. Add this expansion to your King of Tokyo games for fresh twists, new tactics, and even wilder monster showdowns. (Requires a King of Tokyo base game.)



King of Tokyo Duel: Baby Gigazaur Booster		SINGLE: 5.9" x 3.9" x 0.1" / 0.05 LB	ITEM #70302_P03	 3 701551 704313
King of Tokyo: Even More Wicked	<ul style="list-style-type: none"> • 1 Wickedness board • 10 Wickedness Tiles • 15 Monster Counters 	SINGLE: 5.3" x 3.9" x 0.9" / 0.3 LB CASE (12): 4" x 6" x 6" / 4.5 LBS	ITEM #51889	 3 760175 518997
King of Tokyo: Mindbug	<ul style="list-style-type: none"> • 3 Cardboard Figurines • 3 Monster Boards • 24 Power Cards • 3 Wickedness Tokens • 10 Mindbug Tokens • 24 Evolution Cards • 6 Player Aids • 1 Rulesheet 	SINGLE: 5.9" x 5.9" x 2.1" / 0.7 LB CASE (12): 13.6" x 12.6" x 6.7" / TBC	ITEM #70481	 3 701551 704818



King of Tokyo: Monster Pack 2 - King Kong

AGES 8 & Up

King of Tokyo: Monster Pack – King Kong unleashes the legendary ape! Add King Kong as a new playable monster with unique Evolutions, plus an optional Tokyo Tower/Empire State Building challenge for extra thrills. (Requires King of Tokyo base game.)



King of Tokyo: Monster Pack 4 - Cybertooth

AGES 8 & Up

King of Tokyo: Monster Pack – Cybertooth brings a shape-shifting terror to the fight—swap between towering robot and metal sabertooth—and adds Berserk mode with a special die you can use in any game. Includes Evolution cards for King of Tokyo. (Requires King of Tokyo base game.)



King of Tokyo: Monster Pack 5 - Luchador

AGES 8 & Up

King of Tokyo: Monster Pack – Luchador brings a masked wrestling phenom to the rumble! Add this new playable monster with unique Evolutions and body-slam your rivals in style. (Requires King of Tokyo base game)



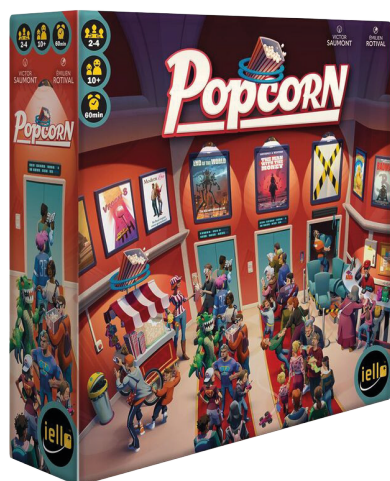
King of Tokyo: Monster Pack 2 – King Kong	<ul style="list-style-type: none">• 1 Cardboard Figure• 1 Monster Board• 1 Empire State Building Figure + 1 Tokyo Tower Figure• 8 Evolution Cards• 1 Beauty Card• 1 Rulebook	SINGLE: 5.9" x 5.5" x 2" / 0.5 LB CASE (12): 6.3" x 11" x 10.5" / 5.7 LBS	ITEM #51421	 3 760175 514210	
King of Tokyo: Monster Pack 4 – Cybertooth	<ul style="list-style-type: none">• 2 Cardboard Figures• 2 Monster Boards• 1 Berserk Die• 6 Berserk Tokens• 1 Transformation Card• 8 Evolution Cards• 1 Rulebook	SINGLE: 5.9" x 5.5" x 2" / 0.4 LB CASE (12): 6.3" x 11" x 10.5" / 5.68 LBS	ITEM #51637	 3 760175 516375	
King of Tokyo: Monster Pack 5 – Luchador	<ul style="list-style-type: none">• 1 Cardboard Figure• 1 Monster Board• 6 Masks + 6 Cardboard Chips• 18 Challenge Cards• 8 Evolution Cards• 1 Luchador Token• 1 Rulebook	<div>watch video</div> 	SINGLE: 5.90" x 5.51" x 1.97" / 0.4 LB CASE (12): 12.2" x 10.6" x 6.3" / 5.1 LBS	ITEM #70361	 3 701551 703613



Little Soldiers

AGES 8 & Up | 2-4 PLAYERS

Little Soldiers turns your table into a battlefield of tiny plastic troops! Duck behind plates and glasses, dash for the cheese-box bunker, and play quick skirmishes packed with clever cards and modular rules. Choose from scenarios like King of the Hill, Battle Royale, Team, or Co-op—all inspired by the classic little green soldiers we've loved for generations. It's a nostalgic throwback that rekindles those childhood battles—now with fresh tactics and big, playful energy.



Popcorn

AGES 10 & Up | 2-4 PLAYERS

Bunny Kingdom is Richard Garfield's clever card-drafting, area-control game where rival rabbit clans claim fiefs, build cities, harvest luxuries, and score big with secret parchment goals. Quick to learn yet satisfyingly strategic, it's a bright, replayable standout for both family nights and hobby tables.



Little Soldiers	<ul style="list-style-type: none"> • 10 Plastic Figurines • 1 Wooden Spoon Catapult • 3 Move Cords • 1 Flag Counter • 7 Dice 	<ul style="list-style-type: none"> • 4 Sheets of Tokens • 74 Cards • 1 Bootcamp Book • 1 Module Book • 1 Mission Book 	<p>Watch video</p>	<p>SINGLE: 8.1" x 8.1" x 2.4" / 1.1 LBS CASE (6): 8.7" x 9.2" x 15.3" / 7.5 LBS</p>	<p>ITEM #70475</p>
Popcorn	<ul style="list-style-type: none"> • 26 Award Cards • 28 Theater Tiles • 1 Claim Tray • 12 Claim Tokens • 60 Spectator Tokens • 2 Hall Trophies 	<ul style="list-style-type: none"> • 43 Dollar Tokens • 4 Cloth Bags • 50 Double-Sided Score Sheets • 86 Popcorn Tokens • 4 Player Aid Cards • 1 Rulebook 	<p>Watch video</p>	<p>SINGLE: 10" x 10" x 2.9" / 2.8 LBS CASE (12): 17.5" x 10.8" x 11" / 17.5 LBS</p>	<p>ITEM #70403</p>



Bunny Kingdom

AGES 14 & Up | 2-4 PLAYERS

Bunny Kingdom is Richard Garfield's clever card-drafting, area-control game where rival rabbit clans claim fiefs, build cities, harvest luxuries, and score big with secret parchment goals. Quick to learn yet satisfyingly strategic, it's a bright, replayable standout for both family nights and hobby tables.



Ancient Knowledge

AGES 12 & Up | 2-4 PLAYERS

Ancient Knowledge is a sleek, combo-rich tableau builder about preserving the wisdom of lost civilizations. Play monuments, artifacts, and technologies onto a timeline where every card drifts toward oblivion each turn—engine up synergies, archive what matters, and score before your knowledge fades. Quick turns, deep decisions, and a smooth ~1-hour play make it a standout for strategy fans and families alike.



Ancient Knowledge: Heritage Expansion

AGES 12 & Up | 1-4 PLAYERS

Ancient Knowledge: Heritage deepens the timeline puzzle with a solo campaign—pick objectives, earn lasting bonuses—and 48 new cards to mix into the deck for more combos and variety (about 25% more cards). Play challenge-style solo or fold the new Monuments, Artifacts, and Tech into multiplayer for fresh synergies every game. (Requires Ancient Knowledge base game.)



Bunny Kingdom	<ul style="list-style-type: none"> • 144 Rabbit Figurines • 39 City Figurines • 1 New World Board • 24 Building Tokens • 182 Exploration Cards • 4 Player Aid Cards • 1 Rulebook 	<p>Watch video</p>	<p>SINGLE: 11.6" x 11.6" x 2.9" / 3.5 LBS CASE (6): 19.3" x 12.6" x 12.6" / 24.25 LBS</p>	ITEM #51313	<p>3 760175 513138</p>
Ancient Knowledge	<ul style="list-style-type: none"> • 4 Building Boards • 193 Cards • 50 Knowledge Tokens • 3 Technology Tiles • 1 Scorepad • 1 First Player Token • 1 Rulebook 	<p>Watch video</p>	<p>SINGLE: 11" x 3.5" x 7.3" / 2.9 LBS CASE (6): 15.2" x 11.4" x 11.8" / 19 LBS</p>	ITEM #70107	<p>3 701551 701077</p>
Ancient Knowledge: Heritage Expansion	<ul style="list-style-type: none"> • 36 Builder cards • 12 Technonoly Cards • 16 Solo Mode Cards • 1 6-sided die • 1 Rulebook 	<p>Watch video</p>	<p>SINGLE: 7.3" x 3.5" x 1.8" / 0.6 LB CASE (6)</p>	ITEM #70259	<p>3 701551 702593</p>



Schotten Totten

AGES 8 & Up | 2 PLAYERS

Schotten Totten is a cheeky, head-to-head duel on the village border. Play colorful clan cards to the nine boundary stones, build the best formations (runs, sets, and sneaky wilds), and claim the stones before your rival does. It's all about timing, bluffing, and reading the other player—quick turns, big swings, endless rematches.






Welcome to the Dungeon

AGES 10 & Up | 2-4 PLAYERS

Welcome to the Dungeon is a cheeky push-your-luck bluffing game where bravado meets bad ideas. Each turn, either toss a monster into the dungeon or strip the hero of a piece of gear—then decide if you're brave enough to keep playing or chicken out. The last player still in takes the hero down with whatever equipment remains: survive to claim glory, or get chomped and take a wound. Quick rounds, big laughs, and delicious brinkmanship every time.



Schotten Totten	<ul style="list-style-type: none"> • 54 Clan Cards • 10 Tactic Cards • 9 Stone Tiles • 2 Player Aids • 1 Rulebook 	<p>Watch video</p> 	<p>SINGLE: 5.9" x 3.9" x 1.6" / 0.6 LB CASE (6): 10.2" x 7" x 4.3" / 3.6 LBS</p>	ITEM #51303	 <p>3 760175 513039</p>
Welcome to the Dungeon	<ul style="list-style-type: none"> • 13 Monster Cards • 8 Success Cards • 28 Tiles • 4 Player Aids • 1 Rulebook 		<p>SINGLE: 5.9" x 3.9" x 1.6" / 0.6 LB CASE (6): 10.2" x 7" x 4.3" / 3.6 LBS</p>	ITEM #51234	 <p>3 760175 512346</p>

Marketing Tools

DopCorn Awards Season!



Little Soldiers General YellaGreen



Bunny Kingdom Promo cards



King Of Tokyo Duel Promo cards



King Of Tokyo Tournament Kit



Host a Iello supported event

Planning a tournament, a game night, or a special event? We can help!
We provide demo games, giveaways, and social media support to make your event a success.

To request goodies or event assistance, contact: marketing@blueorangegames.com



TM

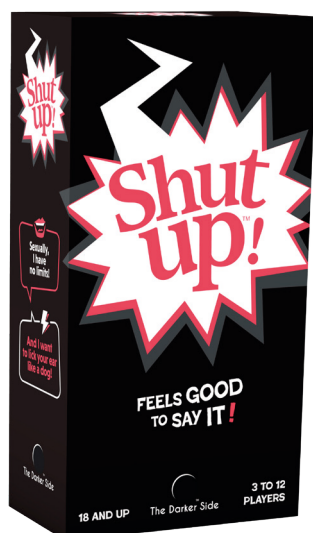
The Darker Side

Welcome to The Darker Side... Blue Orange is diving into social party games that promise to deliver shock, hilarity, and downright insanity! Prepare to be uncomfortable, torture your friends, and pee your pants with laughter playing our new collection of adult party games.



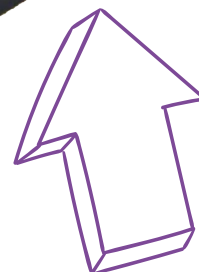
Slingz, 18+ AGES 18 & Up | 2-7 PLAYERS

Turn up the heat on your game night with Slingz, the spicy card game that allows you to talk dirty all night long! Your goal is to find words starting with the letters in your hand, fitting the theme at play. The 280 themes may seem innocent enough when taken literally, but things can get pretty heated, wild and racy once you head to the darker side! Whichever level you take the game to, Slingz will turn a serene game night into a chaotic whirlwind of laughter, leaving a trail of utter carnage as players compete with words and get rid of their cards.

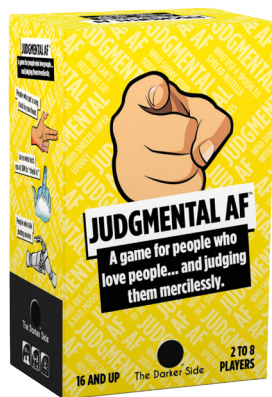


Shut up! AGES 18 & Up | 3-12 PLAYERS

Shut Up! is the uproarious game of quick-witted comebacks, where players relish reading hilarious statements while others gleefully select the best punchlines to silence them... until they become the one targeted to shut up!

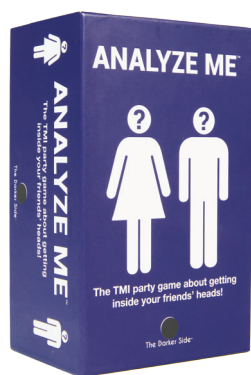
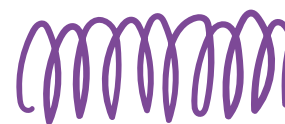


<p>Slingz, 18+</p>	<ul style="list-style-type: none"> • 280 Cards • Illustrated Rules 	<p><i>Watch video</i></p> 	<p>SINGLE: 7.2" x 2.7" x 2.2" / 1.3 LBS CASE (6): 7.9" X 5.9" X 8.5" / 8.4 LBS</p>	<p>ITEM #09083</p>	
<p>Shut up!</p>	<ul style="list-style-type: none"> • 110 Statement Cards • 120 Punchline Cards • 30 Shut Up Cards • Illustrated Rules 	<p><i>Watch video</i></p> 	<p>SINGLE: 3.5" x 7.6" x 1.9" / 0.15 LB CASE (6): 8" x 3.75" x 12" / 1.3 LB</p>	<p>ITEM #09087</p>	



Judgmental AF AGES 16 & Up | 2-8 PLAYERS

Judgemental AF is a brutally honest party game where you judge people you (probably) know! From “people who chew the pen you lent them” to “people who talk to you while you’re using the bathroom,” each round, one player secretly ranks three statement cards using their Judgment Cards: Only Love, Just a Middle Finger, 1 Year Behind Bars or Death Penalty. Everyone else tries to match the Judge’s choices. Match the Judge the most? Score points. First to 10 points triggers the final round. It’s savage. It’s hilarious. It’s Judgmental AF.



Analyze Me AGES 21 & Up | 3-10 PLAYERS

How well do you know your friends? Find out in this TMI party game! Analyze Me is a game about getting inside your friends' heads! Guess how they would react in certain thought-provoking situations in these 5 categories: social, work, bodily functions, vices and sex! The 220 scenarios have no shortage of cringy humor, secondhand embarrassment and sarcasm. Needless to say if you didn't already, you'll get to know your friends a whole lot better.

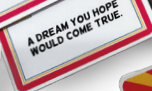


Judgemental AF	<ul style="list-style-type: none"> • 392 Statement Cards • 32 Judgement Cards • 1 Red Card • 1 Board • Illustrated Rules 		SINGLE: 6.5" x 4" x 2.75" / 1.35 LBS CASE (6): 6.8" x 8.3" x 8.55" / 8.3 LBS	ITEM #09322	 8 50076 93203 9
Analyze Me	<ul style="list-style-type: none"> • 220 Question Cards • 27 ABC Answer Cards • Illustrated Rules 	watch video 	SINGLE: 6.5" x 4" x 2.75" / 1.1 LBS CASE (6): 6.8" x 8.3" x 8.55" / 7 LBS	ITEM #09020	 8 03979 09020 7



Patata, 18+ AGES 18 & Up | Unlimited PLAYERS

Have some skin in the hot potato game where it pays to talk smoothly and get a little handsy! Fork over the competition with your loaded quips and always have a seasoned rejoinder at the ready so you can toss the potato to your friends!



Patata, 18+

- 1 Foam Potato
- 100 Double-Sided Theme Cards
- 9 Topping Cards
- Illustrated Rules

SINGLE: 6" x 7.75" x 1.9" / 0.35 LB
CASE (6): 13" X 6.3" X 7.1" / 2.4 LBS

ITEM #09095



Retailer Toolkit

Sign up for our Retailers' Newsletter



Stay informed about promos
& new releases.

Access our image & media library







Download photos, logos, videos, and rules. Also
available in the Retailer section of our website.

Get listed on our Store Locator
Email us at marketing@blueorangegames.com

Index of Games

2 PineApples	8	Chickyboom	14
2Win	29	Cluebox 1: Schrodinger's Cat (id Venture)	58
a-way	12	Cluebox 2: Davy Jones (id Venture)	58
Age of Giants: Expansion	44	Cluebox 3: Nautilus (id Venture)	58
Analyze Me (The Darker Side)	73	Cluebox 4: The Trial of Camelot (id Venture)	59
Ancient Knowledge (IELLO)	68	Cluebox 5: Cambridge Labryinth (id Venture)	59
Ancient Knowledge: Heritage Expansion (IELLO)	68	Cluebox 6: Sherlock's Camera (id Venture)	60
Bag of Chips	35	Cluebox 7: Pyramid of the Sun (id Venture)	60
Battle Sheep	48	Color Scramble with Cora	19
Beagle or Bagel?	35	Cross Clues	34
Beat the 8 Ball	28	Cubeez	20
Belly Flop	8	Do You Know Your Peeps?	29
Bendomino	37	Double Shutter	37
Blind Jack	32	Dragomino	43
BoomBoom the Balancing Panda	13	Dr. Eureka	31
Burger ASAP!	35	Fastrack	36
Bunny Kingdom (IELLO)	68	Fastrack Mini	36
Bunny Kingdom Town (IELLO)	63	Fifty (IELLO)	62

Fifty Fruity	29	Patata!	32
Flash!	39	Patata, 18+ (The Darker Side)	74
FootzyBall	53	Pengoloo	15
Freeze Dance with Chilly	18	Pengoloo Plastic	15
Gobblet!	41	Photosynthesis	40
Gobblet Gobblers	21	Pixy Cubes	26
Gobblet Gobblers Plastic	21	Planet	45
Gobblers	10	Pocket Yamslam	38
Gobblers on the Go!	8	Popcorn (IELLO)	67
Go Go Gelato	22	Queendomino	43
Got Five!	10	Schotten Totten (IELLO)	69
Gygès	12	Scatter Brain	23
Hamster Hammock	7	Shadow House Masquerade	45
Hoot or Toot	19	Shut up! (The Darker Side)	72
Judgemental AF (The Darker Side)	73	Slam Cup	30
Kingdomino	42	Slingz	33
Kingdomino - The Lost Treasures Expansion	42	Slingz, 18+ (The Darker Side)	72
Kingdomino Origins	44	Snip Snap	39
King of Tokyo (IELLO)	64	Sounds Like You!	11
King of Tokyo Duel: Baby Gigazaur Booster (IELLO)	65	Super Genius Collection	24-25
King of Tokyo: Duel (IELLO)	64	Sumoku	23
King of Tokyo: Even More Wicked (IELLO)	65	Swoobee	9/54
King of Tokyo: Mindbug (IELLO)	65	Ta-Da Bing!	16
King of Tokyo: Monster Pack 2 - King Kong (IELLO)	66	Tap a Bell'O	20
King of Tokyo: Monster Pack 4 - Cybertooth (IELLO)	66	Time Bomb (IELLO)	63
King of Tokyo: Monster Pack 5 - Luchador (IELLO)	66	Tongues Out!	17
Link City	34	Tumball	27
Linkx	48	Tumble Maze	26
Little Soldiers (IELLO)	67	Under the Moonlight: Expansion	40
Loopy Hoopies	51	Welcome to the Dungeon (IELLO)	69
Loopy Looper	49-50	What's the Point?	11
Luz (IELLO)	62	Where's Squeaky?	18
Mom'N Pups	7	Who Did it?	30
Next Station London	46	Yamslam	38
Next Station Paris	47	Yo-Spin	9/52
Next Station Tokyo	47	Zimbbos	13
Pancake Monster	16	ZipzyBall	53
Pass the Ball with Olie	19		

Index by Age

3 and up

BoomBoom the Balancing Panda
Color Scramble with Cora
Mom'N Pups
Pancake Monster
Super Genius Alphabet
Zimbbos

13
19
7
16
24
13

4 and up

Chickyboom
Freeze Dance with Chilly
Hoot or Toot
Pass the Ball with Olie
Pengoloo
Pengoloo Plastic
Ta-Da Bing!
Tongues Out!
Where's Squeaky?

14
18
19
19
15
15
16
17
18

5 and up

Dragomino
Fastrack
Fastrack Mini
Gobblers on the Go!
Gobbler Gobblers
Gobbler Gobblers Plastic
Hamster Hammock
Super Genius First Words
Tap a Bell'O
Tumball

43
36
36
8
21
21
7
23
20
27

6 and up

Beat the 8 Ball
Belly Flop
Bendomino
Cubeez

28
8
37
20

Gobblers

10

Go Go Gelato

22

Linkx

48

Loopy Hoopies

51

Pixy Cubes

26

Slam Cup

30

Super Genius Animals

25

Super Genius Fruits & Veggies

25

Super Genius Reading 1

24

Super Genius Reading 2

24

Swoobee

9/54

Who Did it?

30

7 and up

2Win

29

Battle Sheep

48

Beagle or Bagel?

35

Burger ASAP!

35

Cross Clues

34

Do You Know Your Peeps?

29

Flash!

39

FootzyBall

53

Gobbler!

41

Scatter Brain

23

Snip Snap

39

Super Genius Addition

25

Yo-Spin

9/52

ZipzyBall

53

8 and up

2 PineApples

8

Age of Giants: Expansion

44

Bag of Chips

35

Double Shutter

37

Dr. Eureka

31

Fifty (IELLO)

62

Fifty Fruity	29
Got Five!	10
Gygès	12
Kingdomino	42
Kingdomino - The Lost Treasures Expansion	42
Kingdomino Origins	44
King of Tokyo (IELLO)	64
King of Tokyo Duel: Baby Gigazaur Booster (IELLO)	65
King of Tokyo: Duel (IELLO)	64
King of Tokyo: Even More Wicked (IELLO)	65
King of Tokyo: Mindbug (IELLO)	65
King of Tokyo: Monster Pack 2 - King Kong (IELLO)	66
King of Tokyo: Monster Pack 4 - Cybertooth (IELLO)	66
King of Tokyo: Monster Pack 5 - Luchador (IELLO)	66
Link City	34
Little Soldiers (IELLO)	67
Loopy Looper	49-50
Luz (IELLO)	62
Next Station London	46
Next Station Paris	47
Next Station Tokyo	47
Patata!	32
Photosynthesis	40
Planet	45
Pocket Yamslam	38
Queendomino	43
Schotten Totten (IELLO)	69
Shadow House Masquerade	45
Super Genius Compound Words	25
Super Genius Multiplication 1	25
Super Genius Multiplication 2	25
Time Bomb (IELLO)	63
Tumble Maze	26
Yamslam	38

9 and up

Sumoku	23
What's the Point?	11

10 and up

Bunny Kingdom Town (IELLO)	63
Popcorn (IELLO)	67
Slingz	33
Under the Moonlight: Expansion	40
Welcome to the Dungeon (IELLO)	69

12 and up

Ancient Knowledge (IELLO)	68
Ancient Knowledge: Heritage Expansion (IELLO)	68
a-way	12
Blind Jack	32



14 and up

Bunny Kingdom (IELLO)	68
Cluebox 1: Schrodinger's Cat (id Venture)	58
Cluebox 2: Davy Jones (id Venture)	58
Cluebox 3: Nautilus (Id Venture)	58
Cluebox 4: The Trial of Camelot (id Venture)	59
Cluebox 5: Cambridge Labryinth (id Venture)	59
Cluebox 6: Sherlock's Camera (id Venture)	60
Cluebox 7: Pyramid of the Sun (id Venture)	60
Sounds Like You!	11

Adults

Analyze Me (The Darker Side)	73
Judgemental AF (The Darker Side)	73
Patata, 18+ (The Darker Side)	74
Shut up! (The Darker Side)	72
Slingz, 18+ (The Darker Side)	72



NOTES

iDVENTURE



Blue Orange USA

1937 Davis Street, Suite B39

San Leandro CA 94577

P. (415) 252-0372 / F. (415) 252-0369

Email: info@blueorangegames.com

www.blueorangegames.com

Stay connected with Blue Orange Games @blueorangegames



©2026 Blue Orange. All Rights Reserved. All trade names are trademarks of Blue Orange. Specifications subject to change without notice.